

UNIT A

INTERIOR

1,528 SF | 142 M²

TERRACE

264 SF | 25 M²

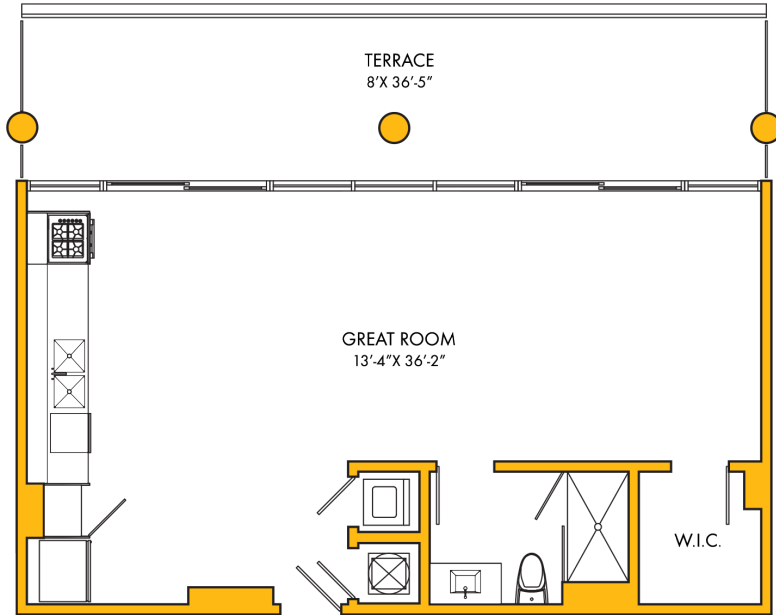
TOTAL

1,792 SF | 167 M²

ALL DIMENSIONS ARE APPROXIMATE AND ALL FLOOR PLANS AND DEVELOPMENT PLANS ARE SUBJECT TO CHANGE. THIS FLOOR PLAN REPRESENTS THE TYPICAL FLOOR PLAN FOR THE RESIDENCE TYPE INDICATED AND IS PROVIDED FOR INFORMATIONAL PURPOSES ONLY. THE ACTUAL FLOOR PLAN OF THE RESIDENCE MAY DIFFER. ALL FEATURES LISTED FOR THE RESIDENCES ARE REPRESENTATIVE ONLY, AND THE DEVELOPER RESERVES THE RIGHT, WITHOUT NOTICE TO OR APPROVAL BY THE BUYER, TO MAKE CHANGES OR SUBSTITUTIONS OF EQUAL OR BETTER QUALITY FOR ANY FEATURES, MATERIALS AND EQUIPMENT.



ORAL REPRESENTATIONS CANNOT BE RELIED UPON AS CORRECTLY STATING THE REPRESENTATION OF THE DEVELOPER. FOR CORRECT REPRESENTATIONS, MAKE REFERENCE TO THE DOCUMENTS REQUIRED BY SECTION 718.503, FLORIDA STATUTES, TO BE FURNISHED BY THE DEVELOPER TO A BUYER OR LESSEE. THIS IS NOT AN OFFER WHERE PROHIBITED BY STATE LAW. PRICES, PLANS AND SPECIFICATIONS ARE SUBJECT TO CHANGE WITHOUT NOTICE. THIS IS NOT INTENDED TO BE OFFER TO SELL NOR A SOLICITATION OF OFFERS TO BUY A UNIT IN ANY JURISDICTION WHERE PROHIBITED BY LAW.



UNIT B

INTERIOR

767 SF | 71 M²

TERRACE

292 SF | 27 M²

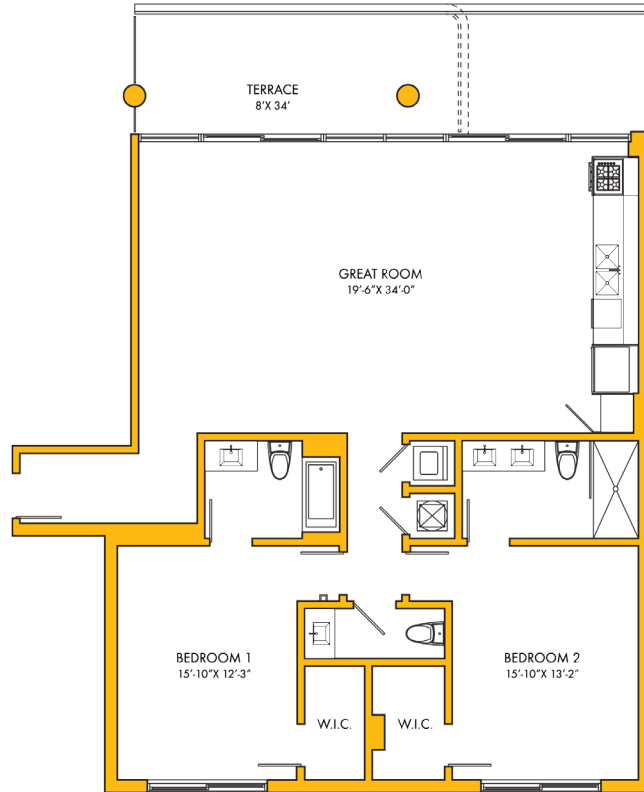
TOTAL

1,059 SF | 98 M²

ALL DIMENSIONS ARE APPROXIMATE AND ALL FLOOR PLANS AND DEVELOPMENT PLANS ARE SUBJECT TO CHANGE. THIS FLOOR PLAN REPRESENTS THE TYPICAL FLOOR PLAN FOR THE RESIDENCE TYPE INDICATED AND IS PROVIDED FOR INFORMATIONAL PURPOSES ONLY. THE ACTUAL FLOOR PLAN OF THE RESIDENCE MAY DIFFER. ALL FEATURES LISTED FOR THE RESIDENCES ARE REPRESENTATIVE ONLY, AND THE DEVELOPER RESERVES THE RIGHT, WITHOUT NOTICE TO OR APPROVAL BY THE BUYER, TO MAKE CHANGES OR SUBSTITUTIONS OF EQUAL OR BETTER QUALITY FOR ANY FEATURES, MATERIALS AND EQUIPMENT.



ORAL REPRESENTATIONS CANNOT BE RELIED UPON AS CORRECTLY STATING THE REPRESENTATION OF THE DEVELOPER. FOR CORRECT REPRESENTATIONS, MAKE REFERENCE TO THE DOCUMENTS REQUIRED BY SECTION 718.503, FLORIDA STATUTES, TO BE FURNISHED BY THE DEVELOPER TO A BUYER OR LESSEE. THIS IS NOT AN OFFER WHERE PROHIBITED BY STATE LAW. PRICES, PLANS AND SPECIFICATIONS ARE SUBJECT TO CHANGE WITHOUT NOTICE. THIS IS NOT INTENDED TO BE OFFER TO SELL NOR A SOLICITATION OF OFFERS TO BUY A UNIT IN ANY JURISDICTION WHERE PROHIBITED BY LAW.



UNIT C

INTERIOR

1,602 SF | 149 M²

TERRACE

276 SF | 26 M²

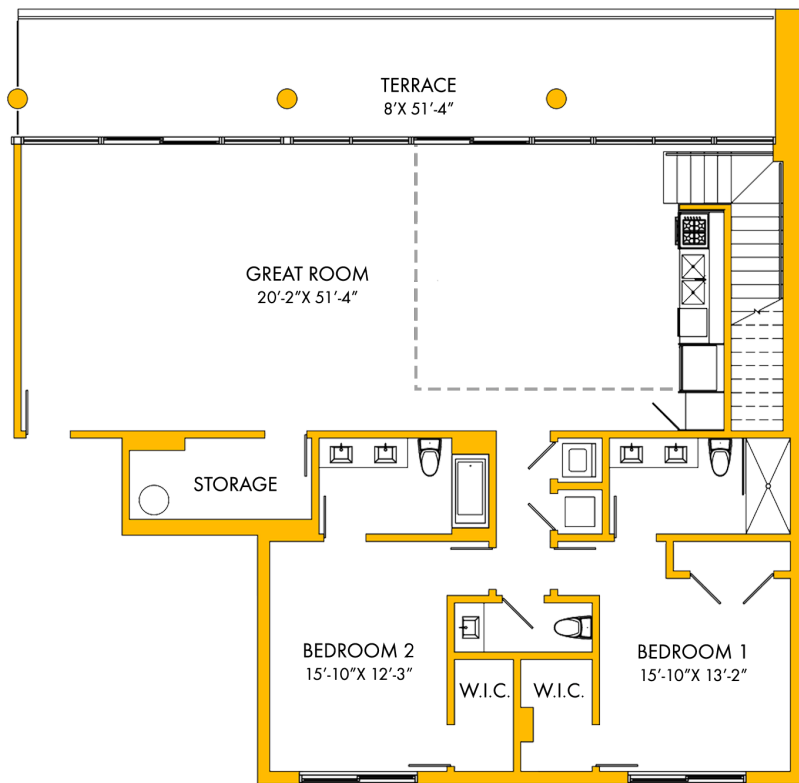
TOTAL

1,878 SF | 175 M²

ALL DIMENSIONS ARE APPROXIMATE AND ALL FLOOR PLANS AND DEVELOPMENT PLANS ARE SUBJECT TO CHANGE. THIS FLOOR PLAN REPRESENTS THE TYPICAL FLOOR PLAN FOR THE RESIDENCE TYPE INDICATED AND IS PROVIDED FOR INFORMATIONAL PURPOSES ONLY. THE ACTUAL FLOOR PLAN OF THE RESIDENCE MAY DIFFER. ALL FEATURES LISTED FOR THE RESIDENCES ARE REPRESENTATIVE ONLY, AND THE DEVELOPER RESERVES THE RIGHT, WITHOUT NOTICE TO OR APPROVAL BY THE BUYER, TO MAKE CHANGES OR SUBSTITUTIONS OF EQUAL OR BETTER QUALITY FOR ANY FEATURES, MATERIALS AND EQUIPMENT.



ORAL REPRESENTATIONS CANNOT BE RELIED UPON AS CORRECTLY STATING THE REPRESENTATION OF THE DEVELOPER. FOR CORRECT REPRESENTATIONS, MAKE REFERENCE TO THE DOCUMENTS REQUIRED BY SECTION 718.503, FLORIDA STATUTES, TO BE FURNISHED BY THE DEVELOPER TO A BUYER OR LESSEE. THIS IS NOT AN OFFER WHERE PROHIBITED BY STATE LAW. PRICES, PLANS AND SPECIFICATIONS ARE SUBJECT TO CHANGE WITHOUT NOTICE. THIS IS NOT INTENDED TO BE OFFER TO SELL NOR A SOLICITATION OF OFFERS TO BUY A UNIT IN ANY JURISDICTION WHERE PROHIBITED BY LAW.



PENTHOUSE A - LOWER

INTERIOR

1,996 SF | 185 M² LOWER

926 SF | 86 M² UPPER

2,922 SF | 271 M² TOTAL

EXTERIOR

410 SF | 38 M² LOWER

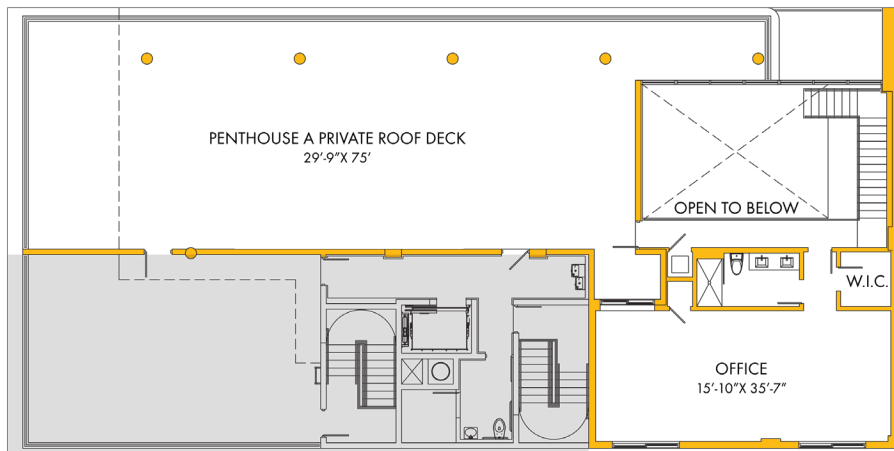
2,117 SF | 196 M² UPPER

2,527 SF | 235 M² TOTAL

ALL DIMENSIONS ARE APPROXIMATE AND ALL FLOOR PLANS AND DEVELOPMENT PLANS ARE SUBJECT TO CHANGE. THIS FLOOR PLAN REPRESENTS THE TYPICAL FLOOR PLAN FOR THE RESIDENCE TYPE INDICATED AND IS PROVIDED FOR INFORMATIONAL PURPOSES ONLY. THE ACTUAL FLOOR PLAN OF THE RESIDENCE MAY DIFFER. ALL FEATURES LISTED FOR THE RESIDENCES ARE REPRESENTATIVE ONLY, AND THE DEVELOPER RESERVES THE RIGHT, WITHOUT NOTICE TO OR APPROVAL BY THE BUYER, TO MAKE CHANGES OR SUBSTITUTIONS OF EQUAL OR BETTER QUALITY FOR ANY FEATURES, MATERIALS AND EQUIPMENT.



ORAL REPRESENTATIONS CANNOT BE RELIED UPON AS CORRECTLY STATING THE REPRESENTATION OF THE DEVELOPER. FOR CORRECT REPRESENTATIONS, MAKE REFERENCE TO THE DOCUMENTS REQUIRED BY SECTION 718.503, FLORIDA STATUTES, TO BE FURNISHED BY THE DEVELOPER TO A BUYER OR LESSEE. THIS IS NOT AN OFFER WHERE PROHIBITED BY STATE LAW. PRICES, PLANS AND SPECIFICATIONS ARE SUBJECT TO CHANGE WITHOUT NOTICE. THIS IS NOT INTENDED TO BE OFFER TO SELL NOR A SOLICITATION OF OFFERS TO BUY A UNIT IN ANY JURISDICTION WHERE PROHIBITED BY LAW.



PENTHOUSE A - UPPER

INTERIOR

1,996 SF | 185 M² LOWER

926 SF | 86 M² UPPER

2,922 SF | 271 M² TOTAL

EXTERIOR

410 SF | 38 M² LOWER

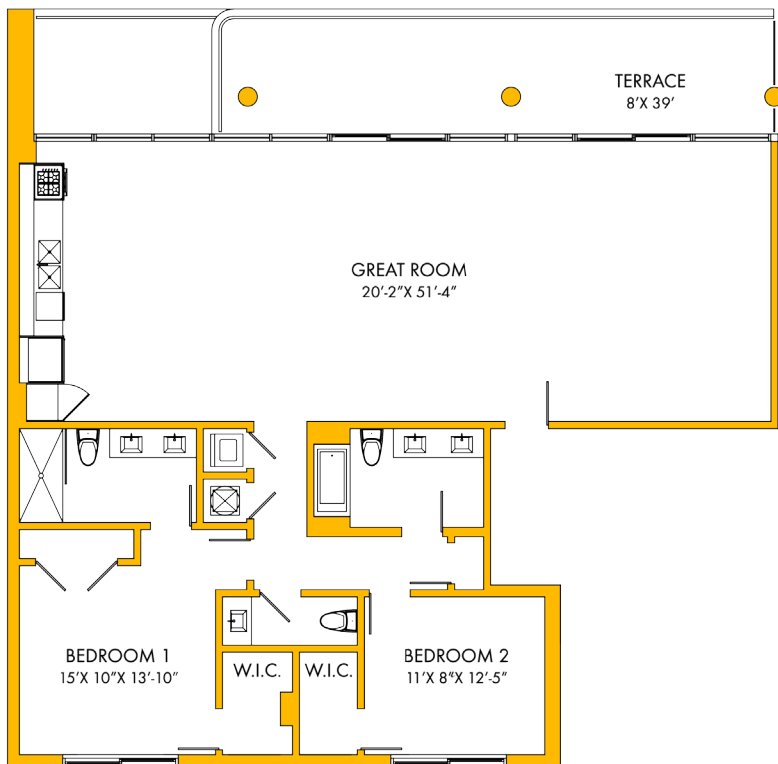
2,117 SF | 196 M² UPPER

2,527 SF | 235 M² TOTAL

ALL DIMENSIONS ARE APPROXIMATE AND ALL FLOOR PLANS AND DEVELOPMENT PLANS ARE SUBJECT TO CHANGE. THIS FLOOR PLAN REPRESENTS THE TYPICAL FLOOR PLAN FOR THE RESIDENCE TYPE INDICATED AND IS PROVIDED FOR INFORMATIONAL PURPOSES ONLY. THE ACTUAL FLOOR PLAN OF THE RESIDENCE MAY DIFFER. ALL FEATURES LISTED FOR THE RESIDENCES ARE REPRESENTATIVE ONLY, AND THE DEVELOPER RESERVES THE RIGHT, WITHOUT NOTICE TO OR APPROVAL BY THE BUYER, TO MAKE CHANGES OR SUBSTITUTIONS OF EQUAL OR BETTER QUALITY FOR ANY FEATURES, MATERIALS AND EQUIPMENT.



ORAL REPRESENTATIONS CANNOT BE RELIED UPON AS CORRECTLY STATING THE REPRESENTATION OF THE DEVELOPER. FOR CORRECT REPRESENTATIONS, MAKE REFERENCE TO THE DOCUMENTS REQUIRED BY SECTION 718.503, FLORIDA STATUTES, TO BE FURNISHED BY THE DEVELOPER TO A BUYER OR LESSEE. THIS IS NOT AN OFFER WHERE PROHIBITED BY STATE LAW. PRICES, PLANS AND SPECIFICATIONS ARE SUBJECT TO CHANGE WITHOUT NOTICE. THIS IS NOT INTENDED TO BE OFFER TO SELL NOR A SOLICITATION OF OFFERS TO BUY A UNIT IN ANY JURISDICTION WHERE PROHIBITED BY LAW.



PENTHOUSE B

INTERIOR

1,916 SF | 178 M²

TERRACE

312 SF | 29 M²

TOTAL

2,228 SF | 207 M²

ALL DIMENSIONS ARE APPROXIMATE AND ALL FLOOR PLANS AND DEVELOPMENT PLANS ARE SUBJECT TO CHANGE. THIS FLOOR PLAN REPRESENTS THE TYPICAL FLOOR PLAN FOR THE RESIDENCE TYPE INDICATED AND IS PROVIDED FOR INFORMATIONAL PURPOSES ONLY. THE ACTUAL FLOOR PLAN OF THE RESIDENCE MAY DIFFER. ALL FEATURES LISTED FOR THE RESIDENCES ARE REPRESENTATIVE ONLY, AND THE DEVELOPER RESERVES THE RIGHT, WITHOUT NOTICE TO OR APPROVAL BY THE BUYER, TO MAKE CHANGES OR SUBSTITUTIONS OF EQUAL OR BETTER QUALITY FOR ANY FEATURES, MATERIALS AND EQUIPMENT.



ORAL REPRESENTATIONS CANNOT BE RELIED UPON AS CORRECTLY STATING THE REPRESENTATION OF THE DEVELOPER. FOR CORRECT REPRESENTATIONS, MAKE REFERENCE TO THE DOCUMENTS REQUIRED BY SECTION 718.503, FLORIDA STATUTES, TO BE FURNISHED BY THE DEVELOPER TO A BUYER OR LESSEE. THIS IS NOT AN OFFER WHERE PROHIBITED BY STATE LAW. PRICES, PLANS AND SPECIFICATIONS ARE SUBJECT TO CHANGE WITHOUT NOTICE. THIS IS NOT INTENDED TO BE OFFER TO SELL NOR A SOLICITATION OF OFFERS TO BUY A UNIT IN ANY JURISDICTION WHERE PROHIBITED BY LAW.