


BALI

COLLECTION



Downtown Doral

 Artist's conception and for the convenience of reference. All dimensions are approximate. The developer reserves the right to change and alter materials, specifications, features, dimensions and designs without notice. Oral representations cannot be relied upon as correctly stating the representations of the developer. For correct representations, reference should be made to documents required by section 718.503 of the Florida Statutes furnished by the developer to the buyer or lessee. Pictures and photographs are solely for illustrative purposes and should not be relied upon when making a decision to purchase a home. Hardscape, landscape and other items shown may be decorator suggestions that are not included in the purchase price and availability may vary. Prices, features, elevations, floor plans and lot details are subject to change without notice.



INSIDE YOUR HOME

- 12"x24" porcelain tile flooring by Daltile in all main living areas
- Premium wood flooring in all bedrooms and on staircases in several color choices
- Statement staircase with stainless steel hand rail and stringers
- LED recessed square lighting throughout home
- Modern style 8' wood interior doors
- Square lever door hardware by Baldwin®
- Modern wood door casings and baseboards
- Front load washer and dryer, quartz countertop, wood cabinetry by Italkraft, faucet by Kohler® and sink by Kohler/ Sterling® in laundry room
- Finishes by Kohler® in all bathrooms
- Built in smart home technology
- Energy efficient natural gas tankless hot water heater
- Volume ceilings throughout ranging from 9'4" to 11' (per plan and room)
- Vessel sink and premium toilet by Kohler® in powder room

INSIDE YOUR KITCHEN

- 42" Subzero® refrigerator with panels by Italkraft to match cabinets
- Wolf® oven with microwave
- Subzero® under-counter wine cellar
- 36" Wolf® gas cooktop
- Elegant stainless-steel hood
- Large stainless-steel single bowl under-counter mount sink by Kohler®
- Professional sink faucet with pullout spout by Kohler®
- Premium quartz countertops with mitered edge in several color choices
- Full tile backsplash by Daltile in many designs and color choices
- Premium high gloss or wood veneer cabinetry with soft close hinges by Italkraft
- Premium high gloss or wood veneer cabinetry by Italkraft on kitchen island

INSIDE YOUR BATHROOMS

MASTER BATHROOM

- 12"x24" porcelain by Daltile on floor and shower walls with accent mosaic tile
- Kohler® freestanding bathtub per plan and Kohler® faucets
- Kohler® bidet and toilet
- Tall single handle faucet by Kohler®
- Vox vessel sinks by Kohler®
- Floating high gloss lacquer or wood veneer cabinetry by Italkraft in several color choices
- Premium quartz countertops with mitered edge in several color choices

SECONDARY BATHROOMS

- 12"x24" porcelain by Daltile on floor and shower walls with accent mosaic tile
- Rectangular undermount sink by Kohler®
- Single handle faucets by Kohler®
- Floating cabinetry by Italkraft in several color choices
- Premium quartz countertops with mitered edge in several color choices



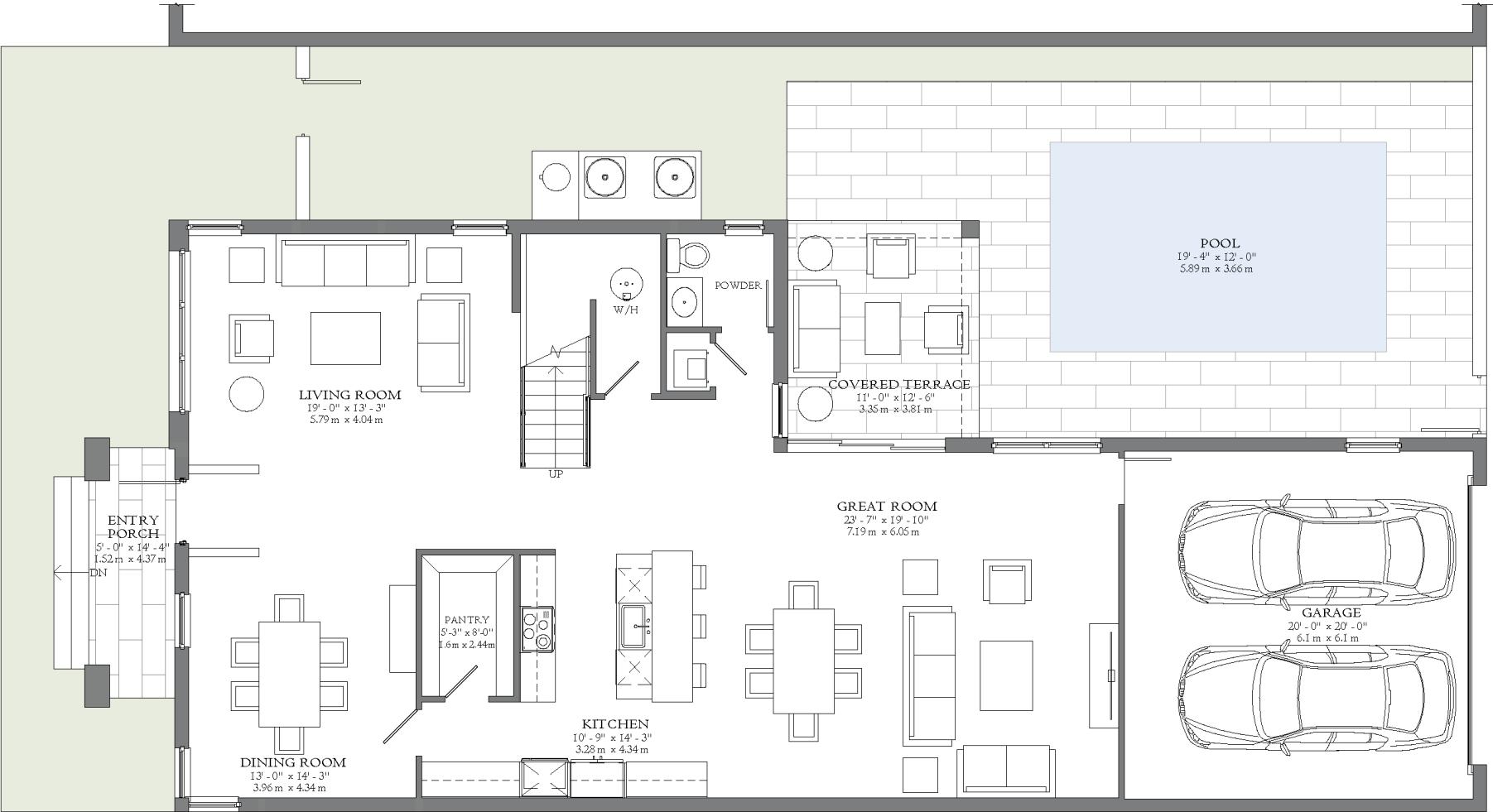
BALI

MODEL A

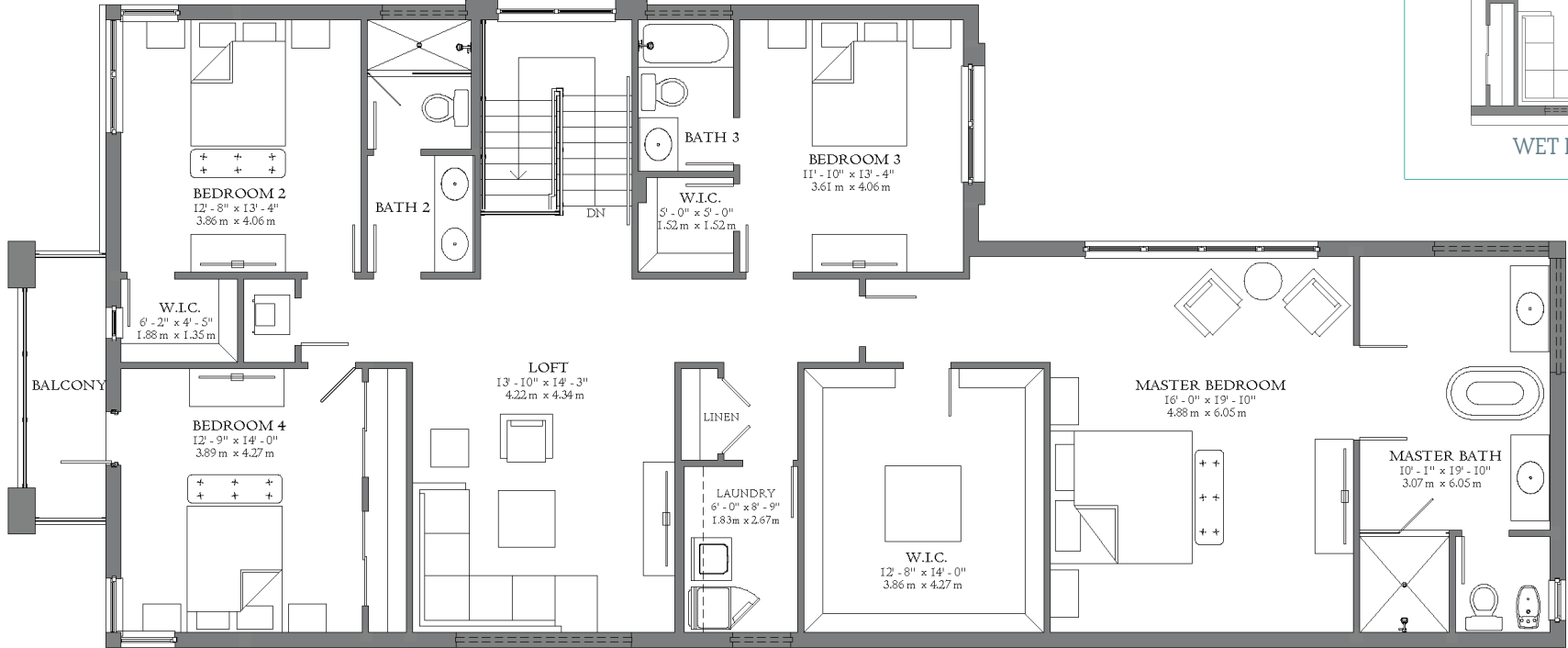
Two-Story
Single-Family Home
4 bedrooms, 3.5 bathrooms,
2-car garage at rear.

3,818 AC SF » 354.70 M²
4,536 TOTAL SF » 42140 M²

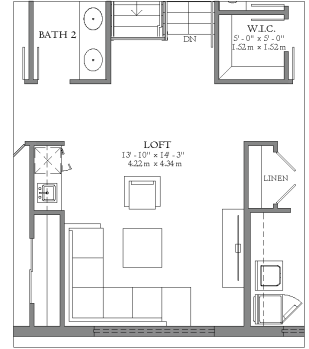
SEE ADDITIONAL OPTIONS



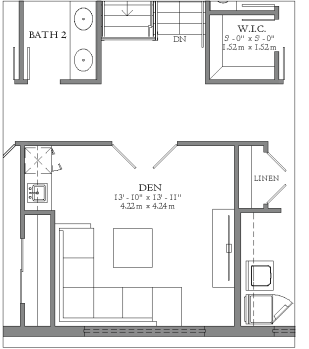
FIRST LEVEL
1600 A/C SF » 148.64 M²



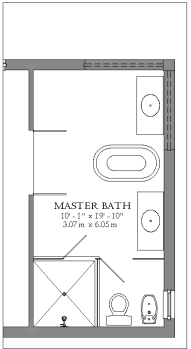
SECOND LEVEL
2,218 A/C SF » 206.06 M²



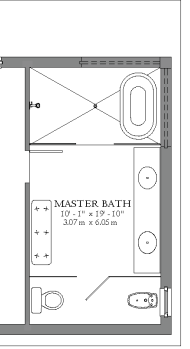
WET BAR AT LOFT



DEN W/ WET BAR IN LIEU OF LOFT

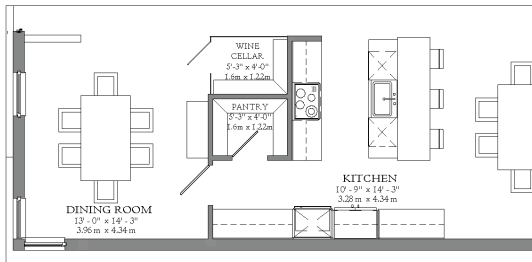


GLASS PARTITION AT TOILET ROOM IN LIEU OF WALL

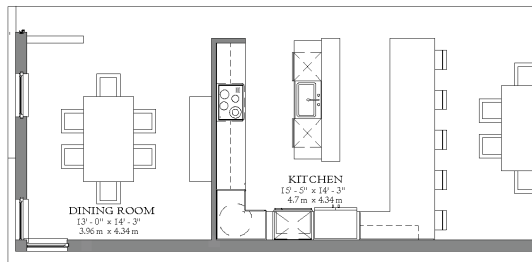


ALTERNATE MASTER BATH

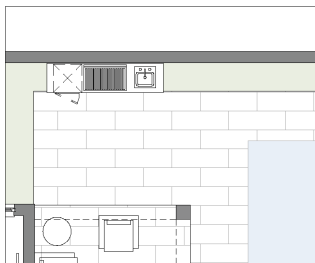
SECOND LEVEL OPTIONS



WINE CELLAR AT KITCHEN



ALTERNATE KITCHEN



SUMMER KITCHEN

FIRST LEVEL OPTIONS





BALI A | COASTAL - TWO-STORY



BALI A | CONTEMPORARY - TWO-STORY



BALI A | SANTA BARBARA - TWO-STORY



BALI A | COASTAL - THREE-STORY



BALI A | CONTEMPORARY - THREE-STORY

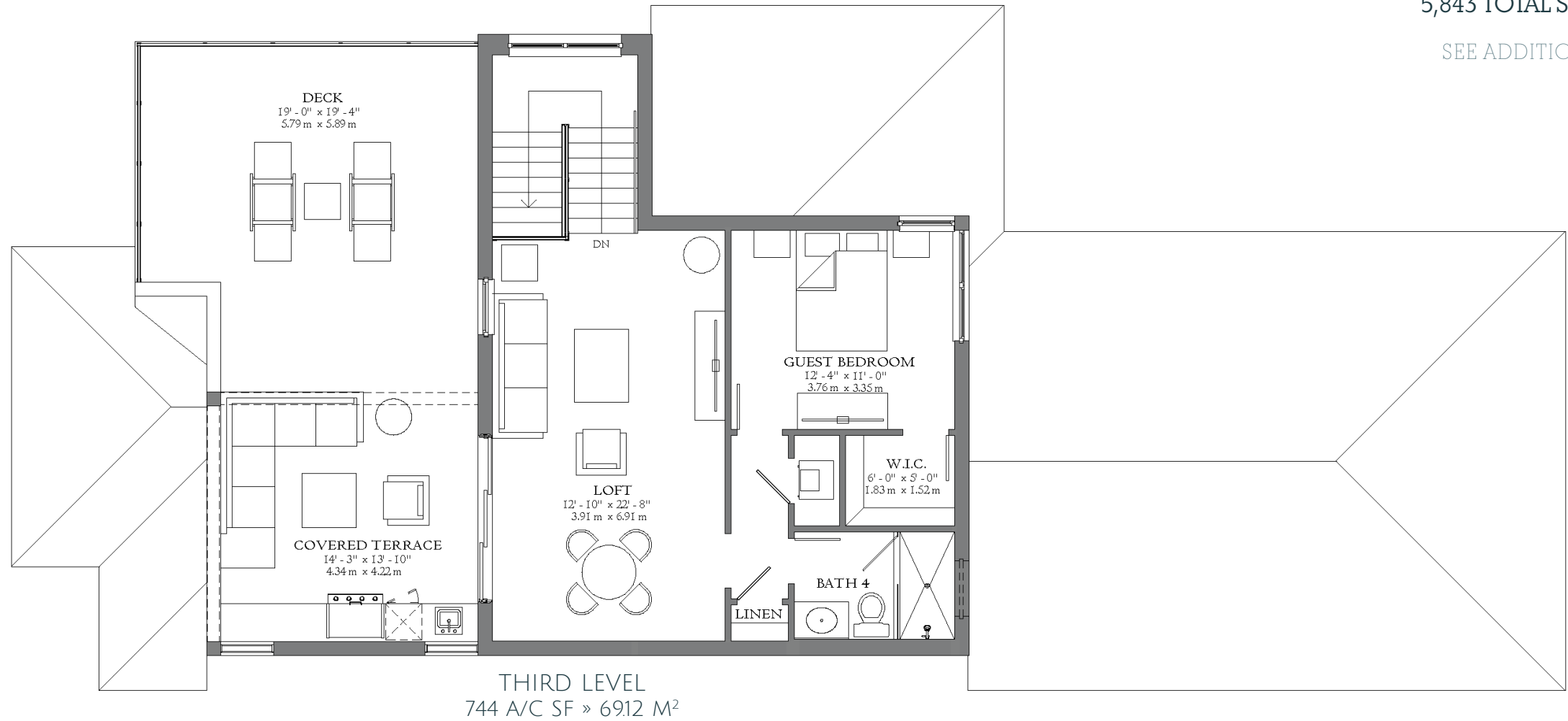


BALI MODEL A

Three-Story
Single-Family Home
5 bedrooms, 4.5 bathrooms,
roof deck and covered terrace

4,562 AC SF » 423.82 M²
5,843 TOTAL SF » 542.82 M²

SEE ADDITIONAL OPTIONS



BALI

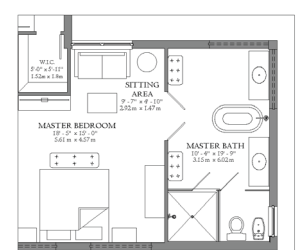
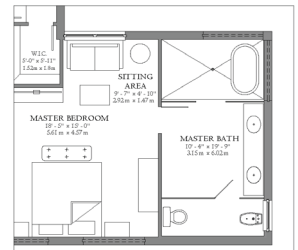
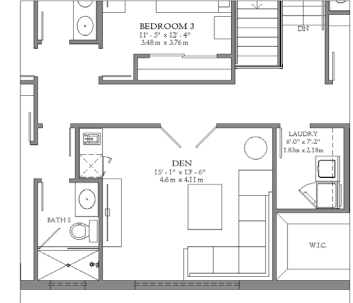
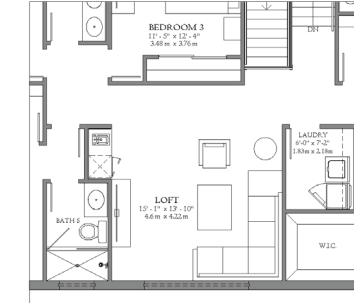
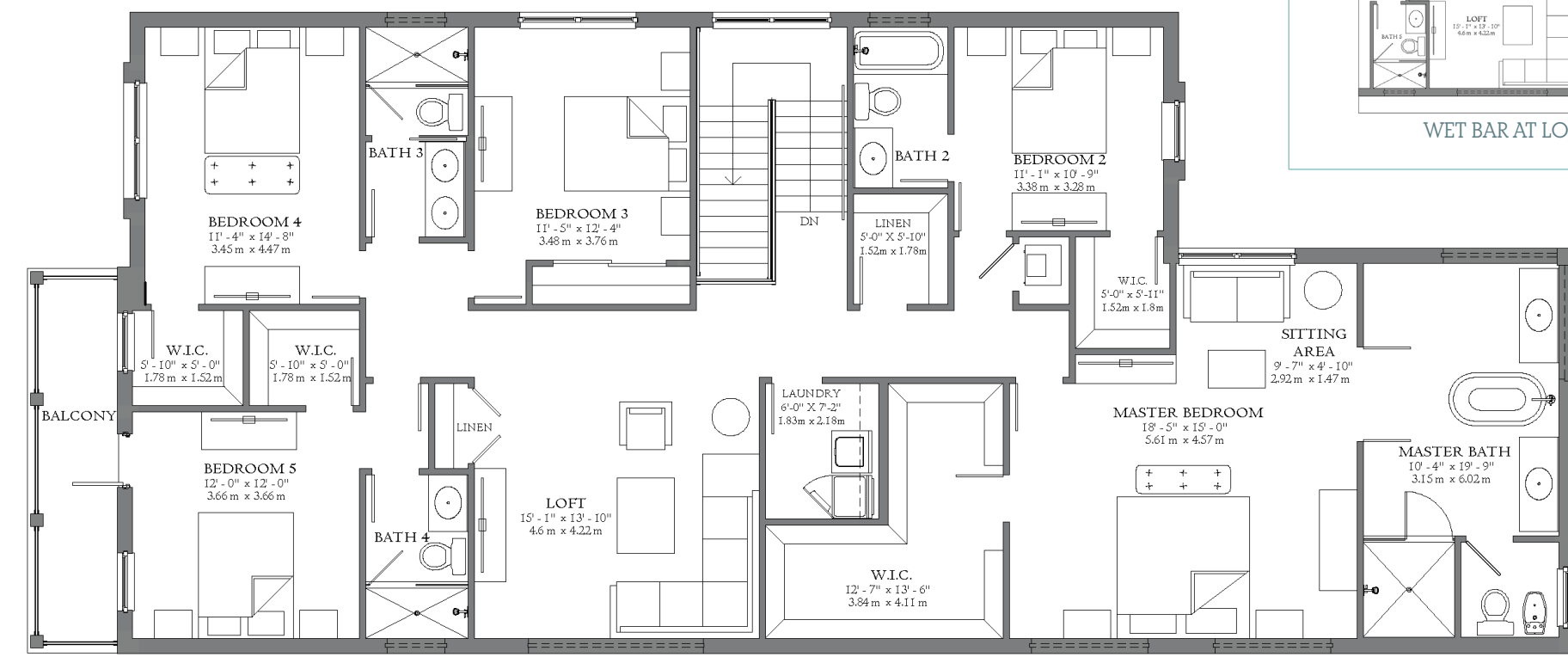
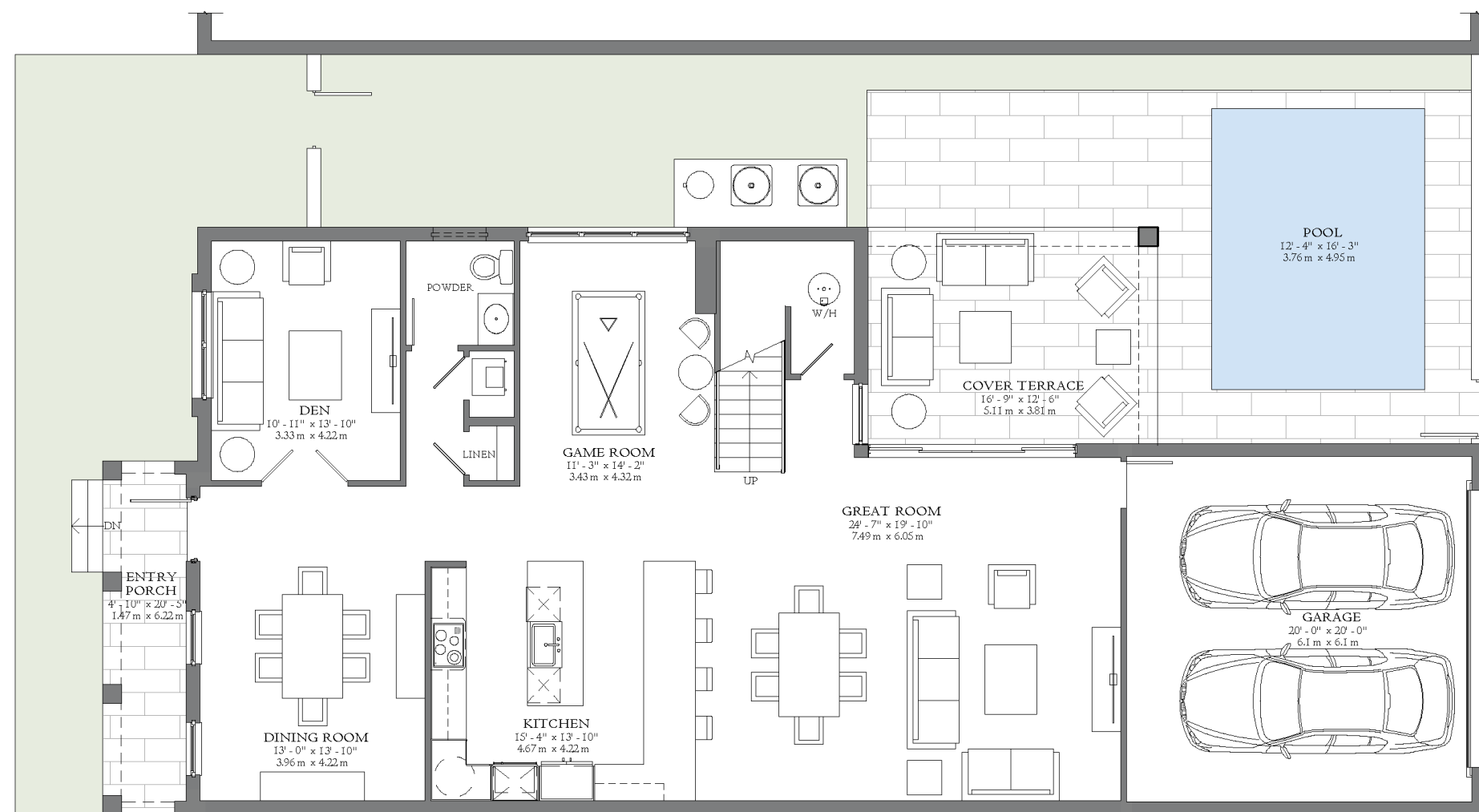
MODEL B

Two-Story
Single-Family Home

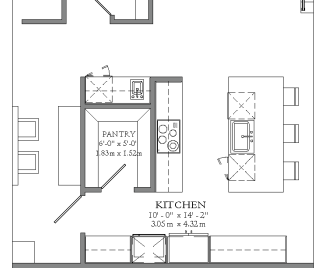
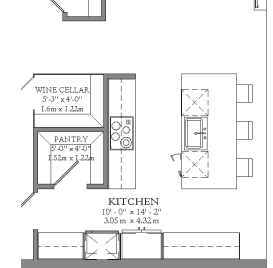
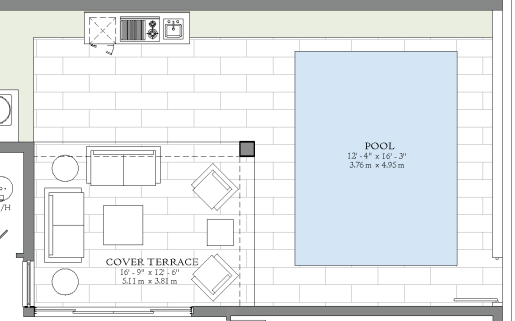
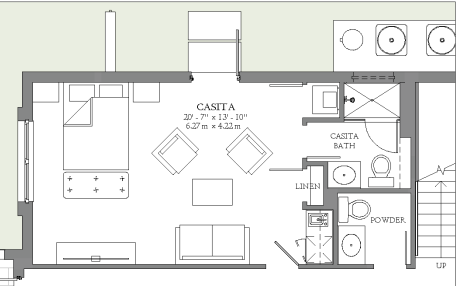
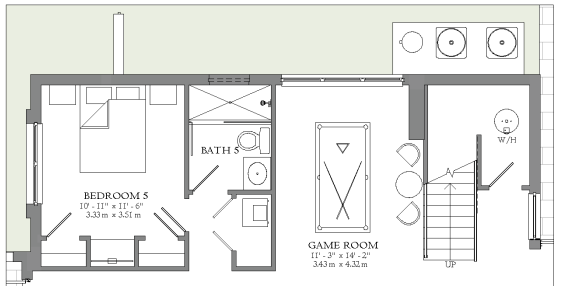
5 bedrooms, 4.5 bathrooms,
2-car garage at rear.

3,977 AC SF » 369.44 M²
4,811 TOTAL SF » 446.98 M²

SEE ADDITIONAL OPTIONS



SECOND LEVEL OPTIONS



FIRST LEVEL OPTIONS





BALI B | COASTAL - TWO-STORY



BALI B | CONTEMPORARY - TWO-STORY



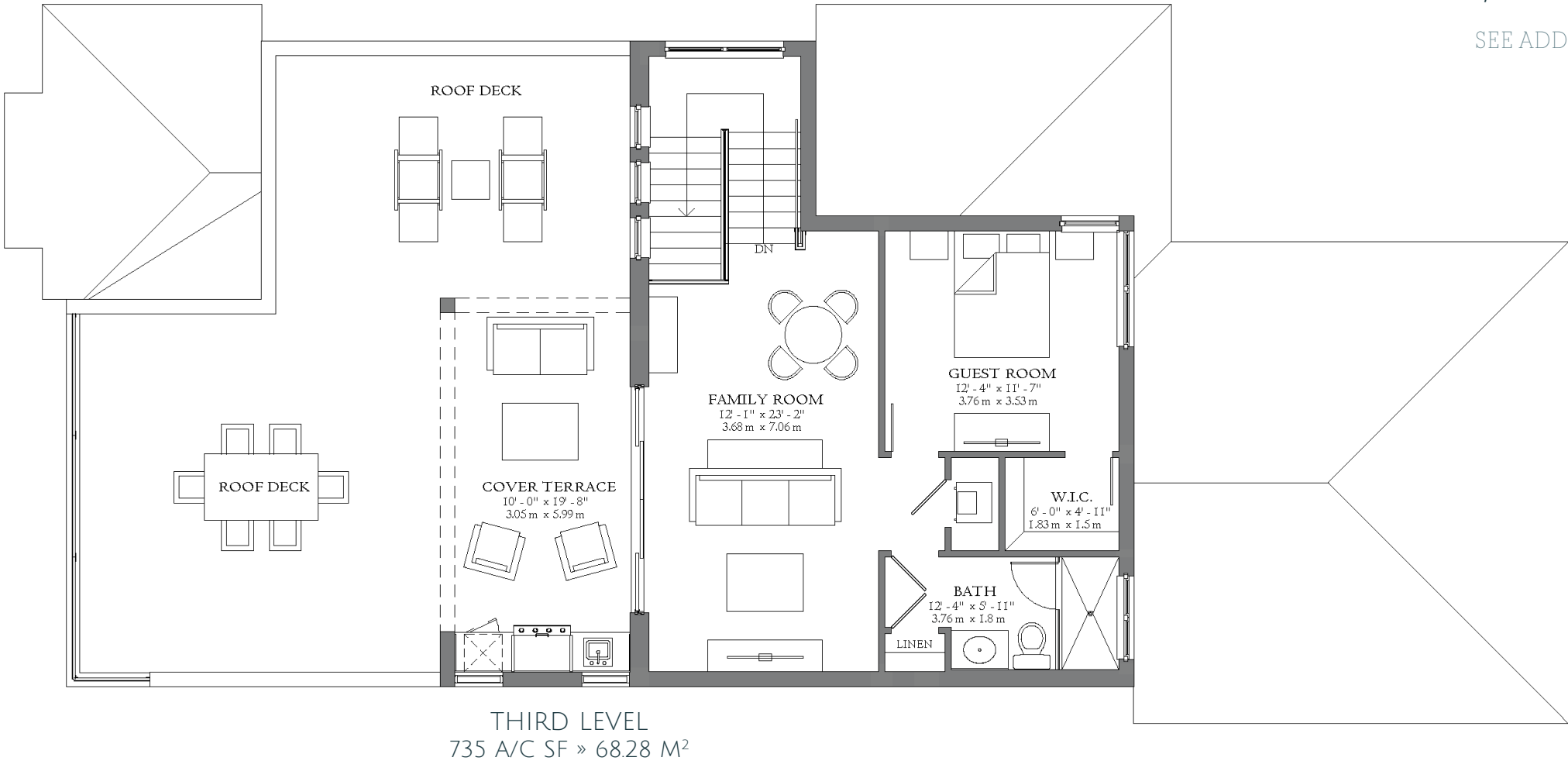
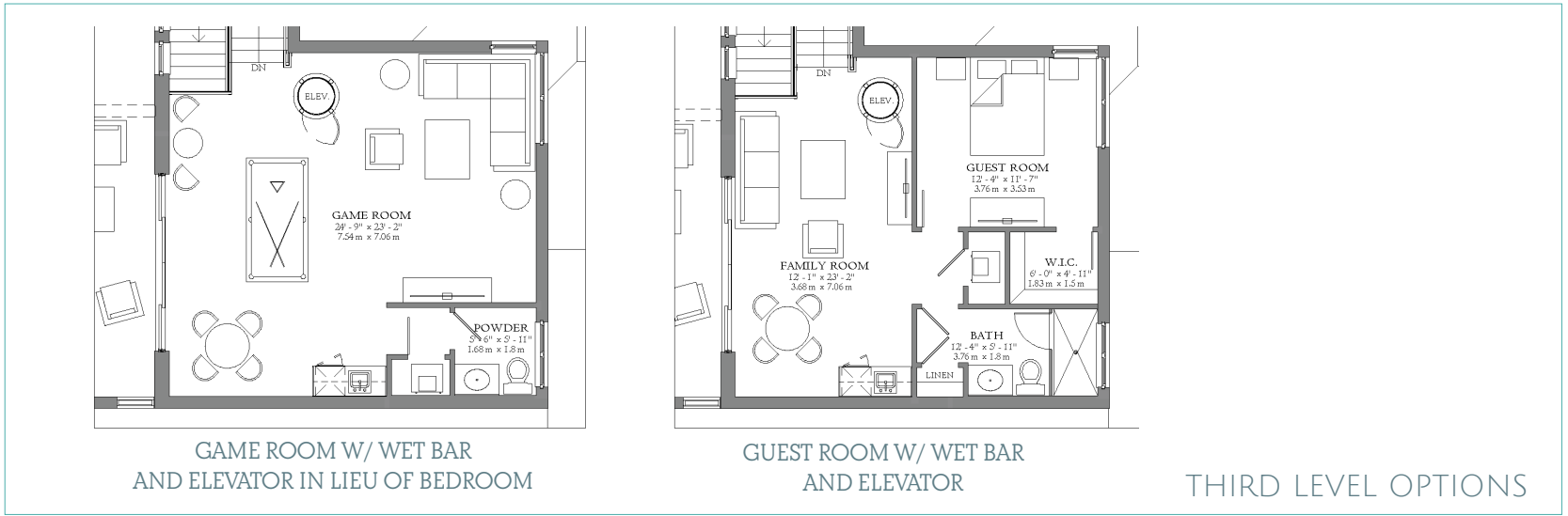
BALI B | SANTA BARBARA - TWO-STORY



BALI B | COASTAL - THREE-STORY



BALI B | CONTEMPORARY - THREE-STORY



BALI MODEL B

Three-Story
Single-Family Home

6 bedrooms, 5.5 bathrooms,
roof deck and covered terrace

4,712 AC SF » 437.74 M²
6,417 TOTAL SF » 596.13 M²

SEE ADDITIONAL OPTIONS

BALI

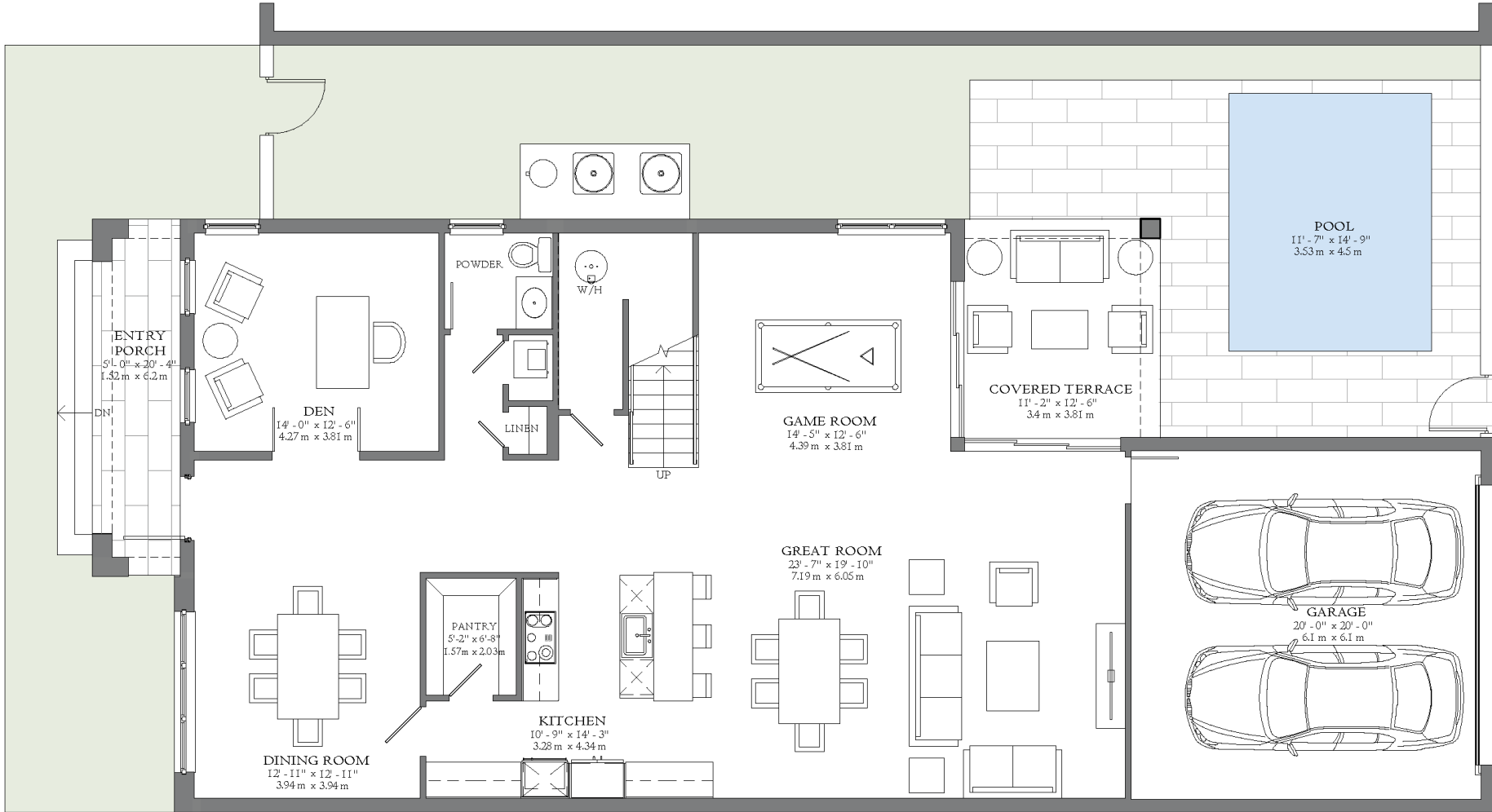
MODEL C

Two-Story
Single-Family Home

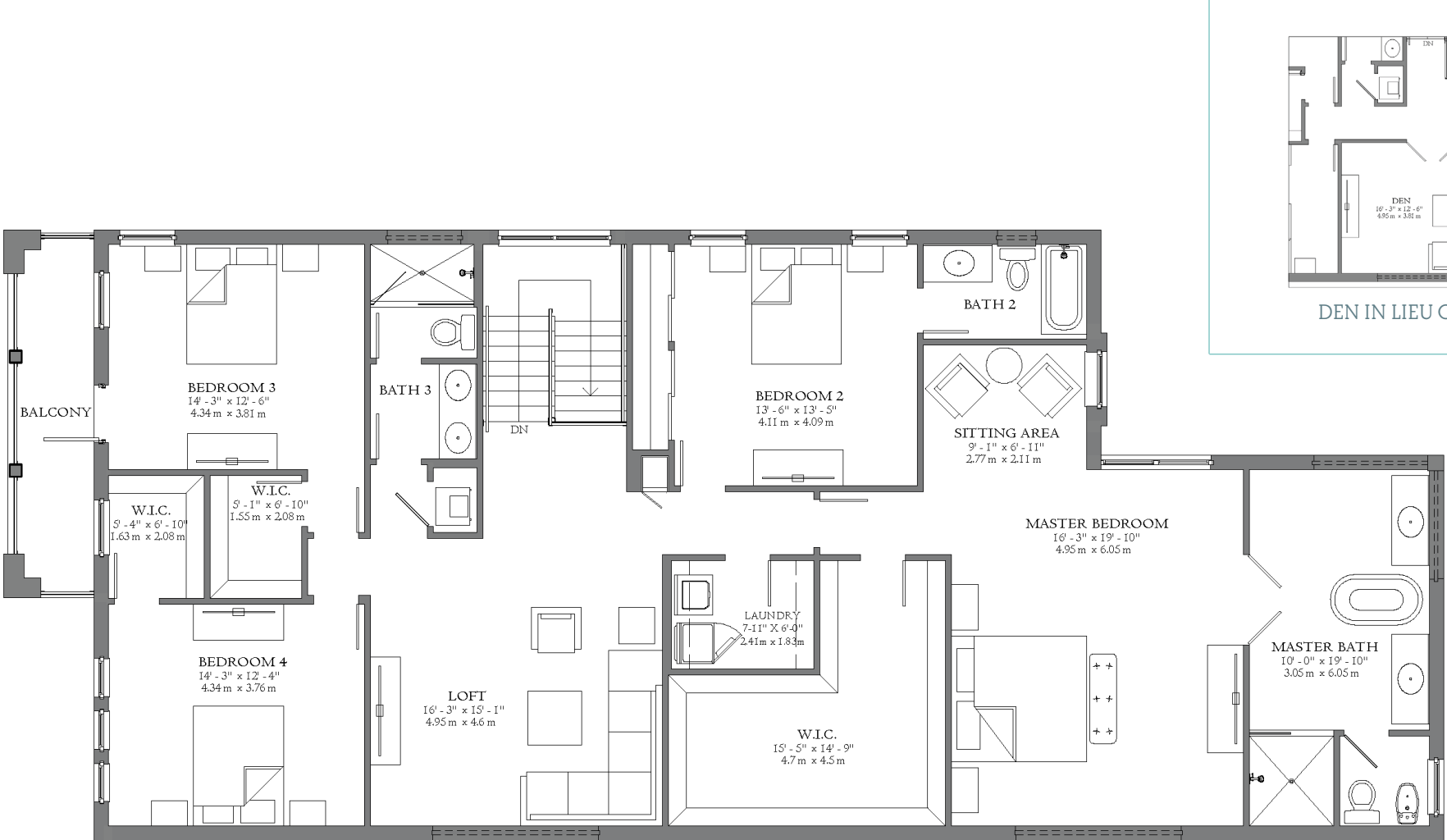
4 bedrooms, 3.5 bathrooms,
2-car garage at rear.

4,017 AC SF » 373.18 M²
4,798 TOTAL SF » 445.74 M²

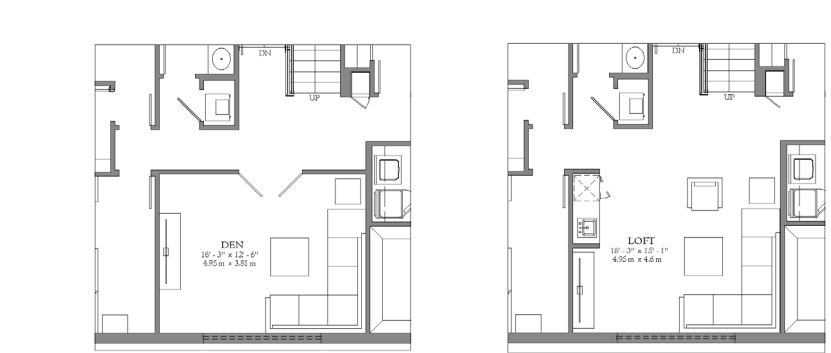
SEE ADDITIONAL OPTIONS



FIRST LEVEL
1,718 A/C SF » 159.60 M²



SECOND LEVEL
2,299 A/C SF » 213.58 M²

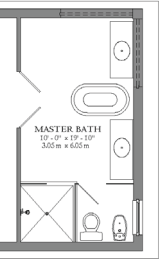


DEN IN LIEU OF LOFT

WET BAR AT LOFT

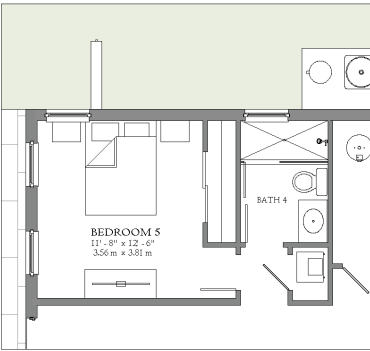


ALTERNATE
MASTER BATH

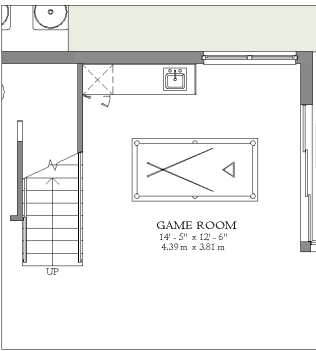


GLASS PARTITION AT TOILET
ROOM IN LIEU OF WALL

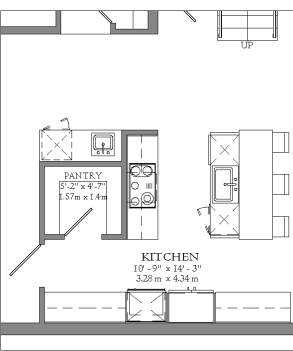
SECOND LEVEL OPTIONS



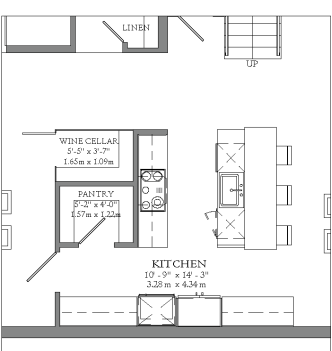
BEDROOM IN LIEU OF DEN



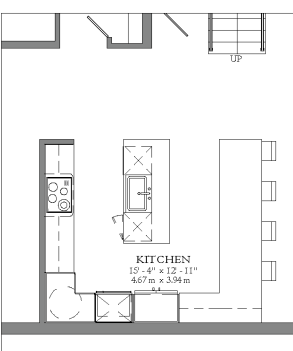
WET BAR AT GAME ROOM



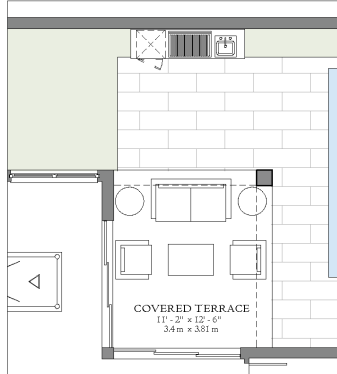
WET BAR AT KITCHEN



WINE CELLAR



ALTERNATE KITCHEN



SUMMER KITCHEN

FIRST LEVEL OPTIONS





BALI C | COASTAL - TWO-STORY



BALI C | CONTEMPORARY - TWO-STORY



BALI C | SANTA BARBARA - TWO-STORY



BALI C | COASTAL - THREE-STORY



BALI C | CONTEMPORARY - THREE-STORY

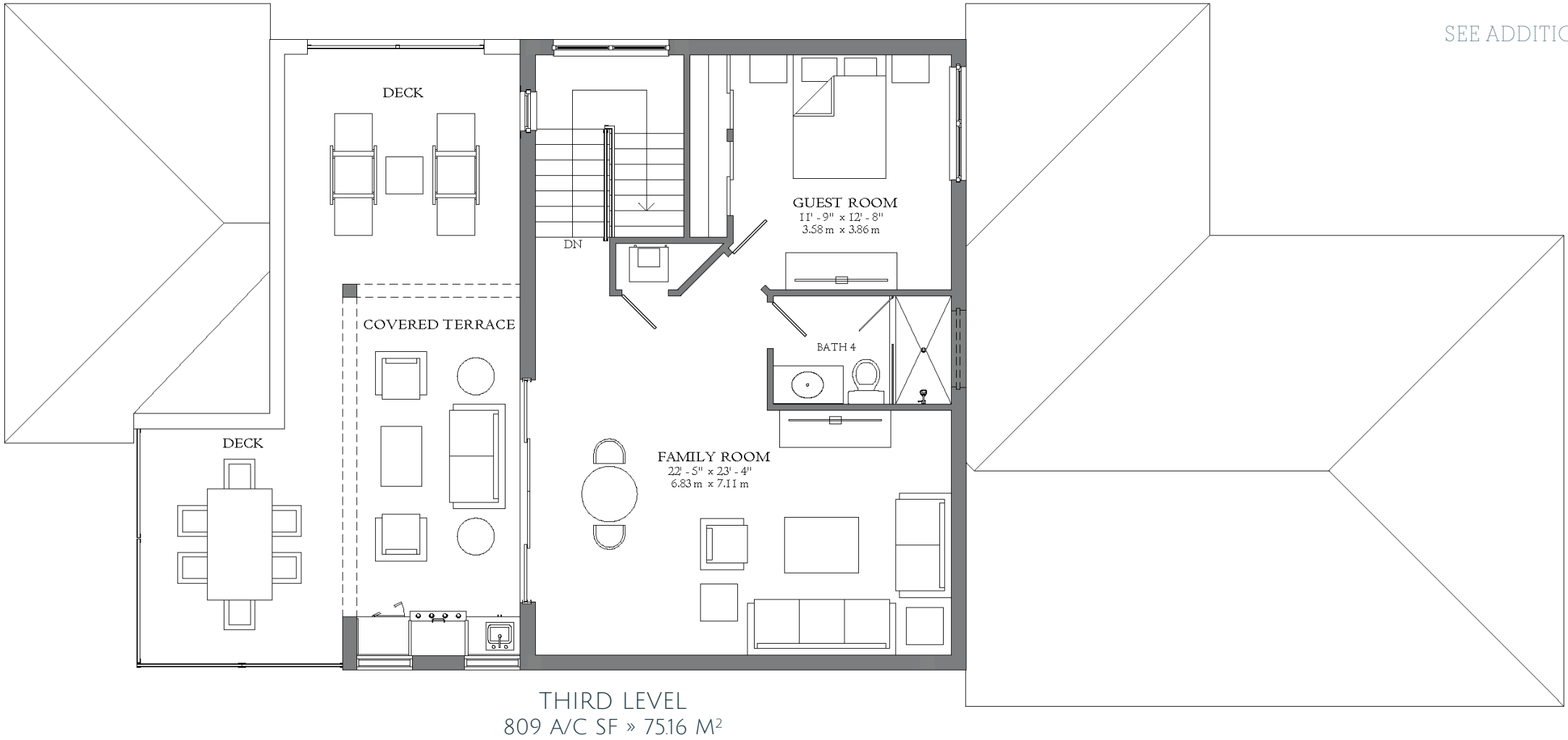


BALI MODEL C

Three-Story
Single-Family Home
5 bedrooms, 4.5 bathrooms,
roof deck and covered terrace

4,826 AC SF » 448.34 M²
6,164 TOTAL SF » 572.64 M²

SEE ADDITIONAL OPTIONS






BALI C | GAME ROOM



BALI B | KITCHEN & WINE/BREAKFAST ROOM



 BALI B | ROOF DECK



BALI C | DEN/OFFICE 