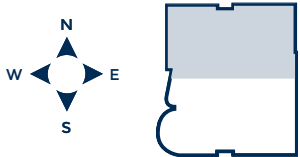


A1 NORTH

4th-11th Floor		
3 BEDROOMS - 3½ BATHROOMS		
RESIDENCE	2,300 sq. ft.	214 sq. mts.
TERRACE	1,069 sq. ft.	99 sq. mts.
<hr/>		
TOTAL	3,369 sq. ft.	313 sq. mts.

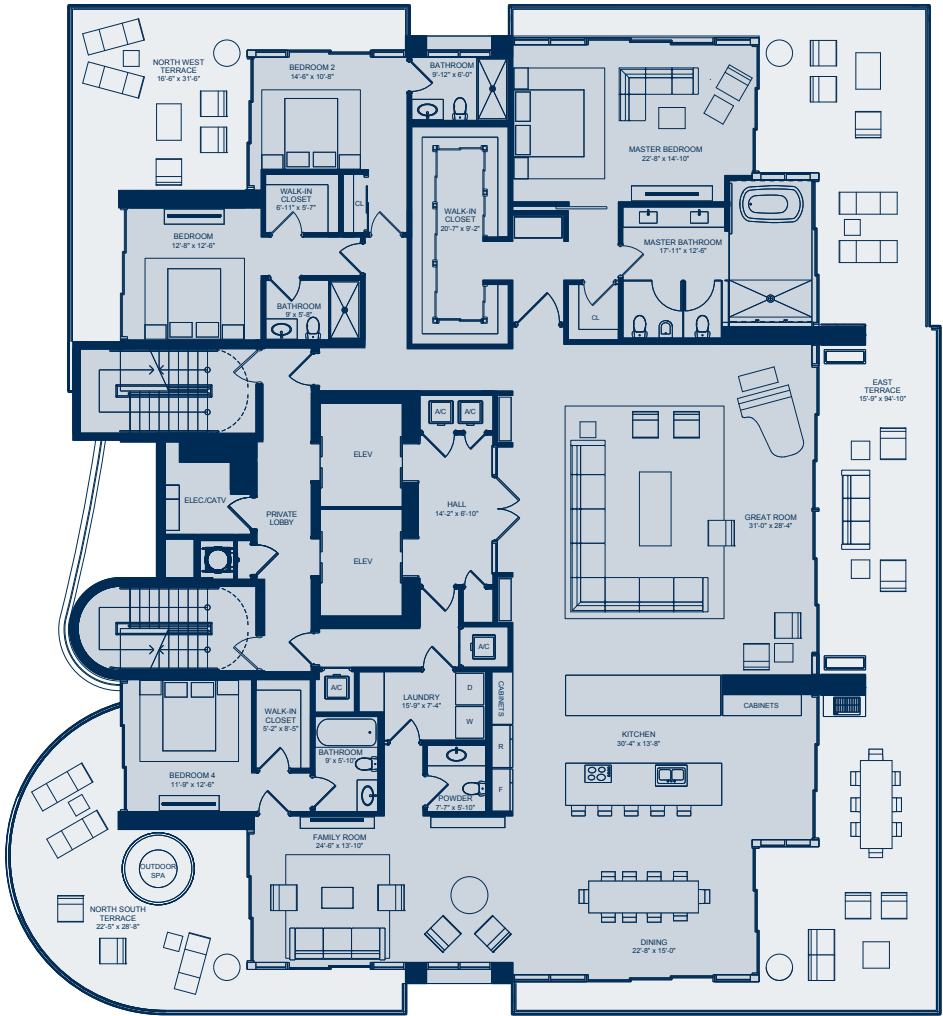


12th-16th Floor		
4 BEDROOMS - 4 1/2 BATHROOMS		
RESIDENCE	4,600 sq. ft.	427 sq. mts.
TERRACE	2,240 sq. ft.	208 sq. mts.
<hr/>		
TOTAL	6,840 sq. ft.	635 sq. mts.

Collins Avenue

Atlantic Ocean

69th Street



L' ATELIER

MIAMI BEACH



A1 NORTH

4th-11th Floor

3 BEDROOMS - 3½ BATHROOMS

RESIDENCE	2,300 sq. ft.	214 sq. mts.
TERRACE	1,069 sq. ft.	99 sq. mts.
TOTAL	3,369 sq. ft.	313 sq. mts.



All plans, elevations, specifications, designs, dimensions, and unit orientation are subject to change without notice by Developer. Unit boundaries, for purposes of determining the square footage of the area of units, are based on dimensions that are measured to the undecorated interior surfaces of walls bounding the units. This method of measurement may vary from the dimensions that would be determined by using the description and definition of the "Unit" set forth in a Declaration of Condominium for the building of which the unit will be a part. Please refer to the Declaration of Condominium for your unit's size according to this method of measurement. The floor plan and square footage referenced herein are believed to be true and accurate, but are not guaranteed and may be revised, amended, or changed without notice. All dimensions and orientations are approximate, and are subject to change in accordance with a contract of sale. Terrace size and layout shown are approximate and vary by floor. Please refer to the specific floor plan of your unit for accurate dimensions.

L' ATELIER

MIAMI BEACH



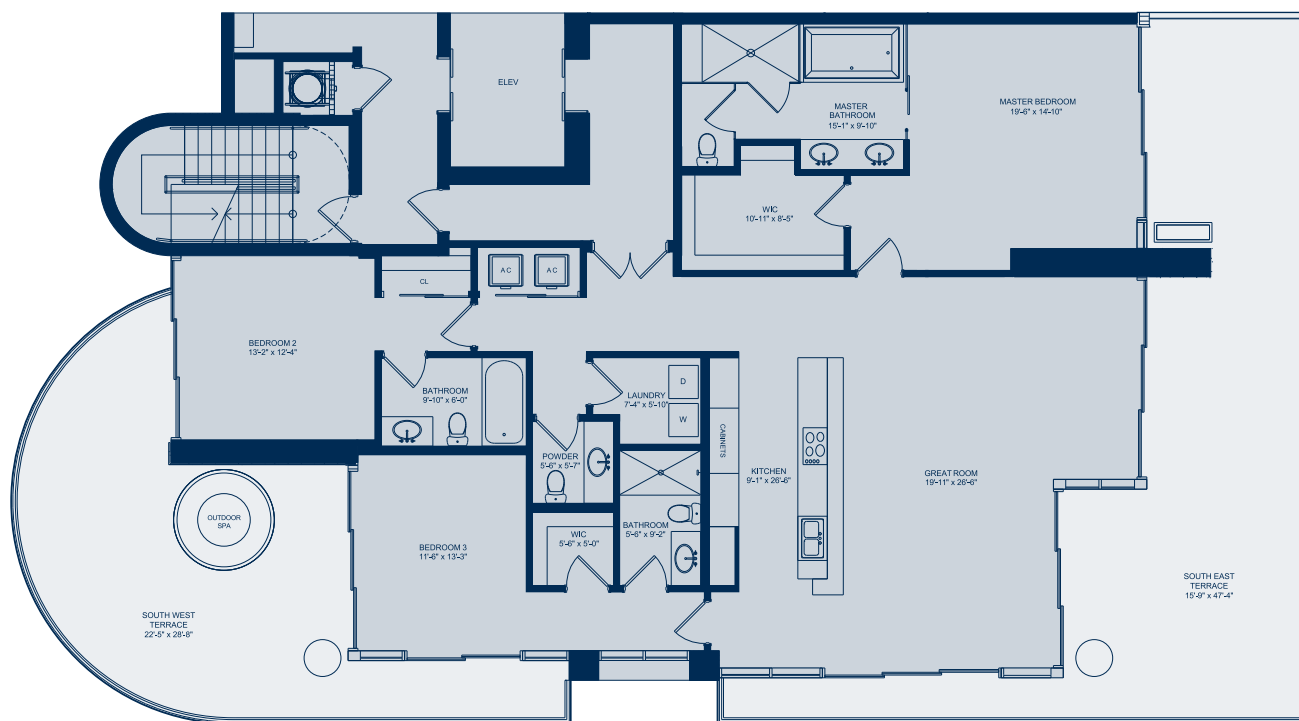
A2 SOUTH

4th-11th Floor

3 BEDROOMS - 3½ BATHROOMS

RESIDENCE	2,300 sq. ft.	214 sq. mts.
TERRACE	1,171 sq. ft.	109 sq. mts.
TOTAL	3,471 sq. ft.	322 sq. mts.

Collins Avenue



Atlantic Ocean

69th Street



All plans, elevations, specifications, designs, dimensions, and unit orientation are subject to change without notice by Developer. Unit boundaries, for purposes of determining the square footage of the area of units, are based on dimensions that are measured to the undecorated interior surfaces of walls bounding the units. This method of measurement may vary from the dimensions that would be determined by using the description and definition of the "Unit" set forth in a Declaration of Condominium for the building of which the unit will be a part. Please refer to the Declaration of Condominium for your unit's size according to this method of measurement. The floor plan and square footage referenced herein are believed to be true and accurate, but are not guaranteed and may be revised, amended, or changed without notice. All dimensions and orientations are approximate, and are subject to change in accordance with a contract of sale. Terrace size and layout shown are approximate and vary by floor. Please refer to the specific floor plan of your unit for accurate dimensions.

A2 SOUTH

4th-11th Floor		
3 BEDROOMS - 3½ BATHROOMS		
RESIDENCE	2,300 sq. ft.	214 sq. mts.
TERRACE	1,171 sq. ft.	109 sq. mts.
<hr/>		
TOTAL	3,471 sq. ft.	322 sq. mts.

Collins Avenue



Atlantic Ocean

69th Street

