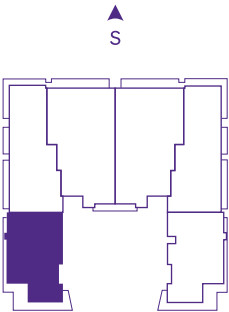
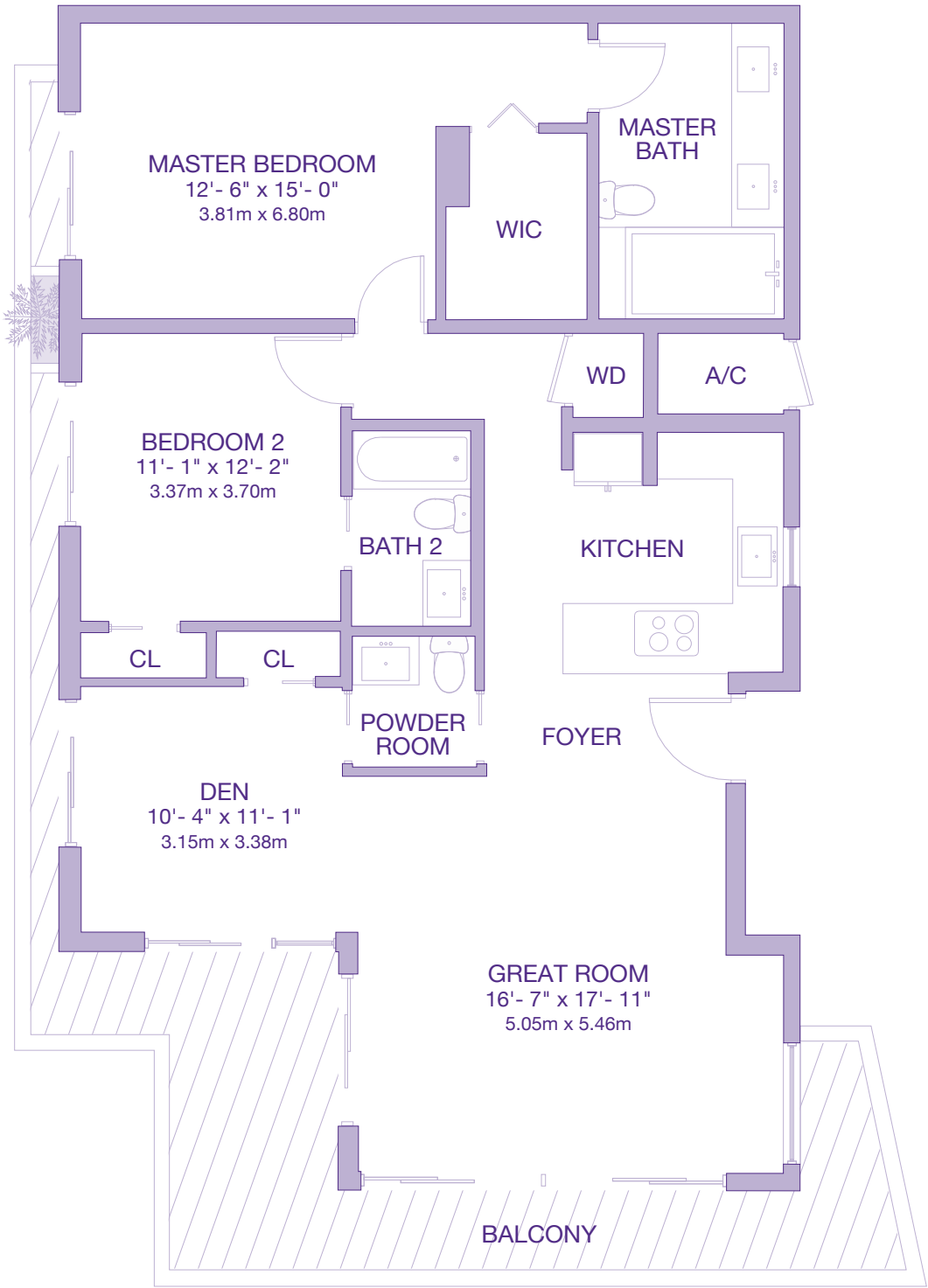
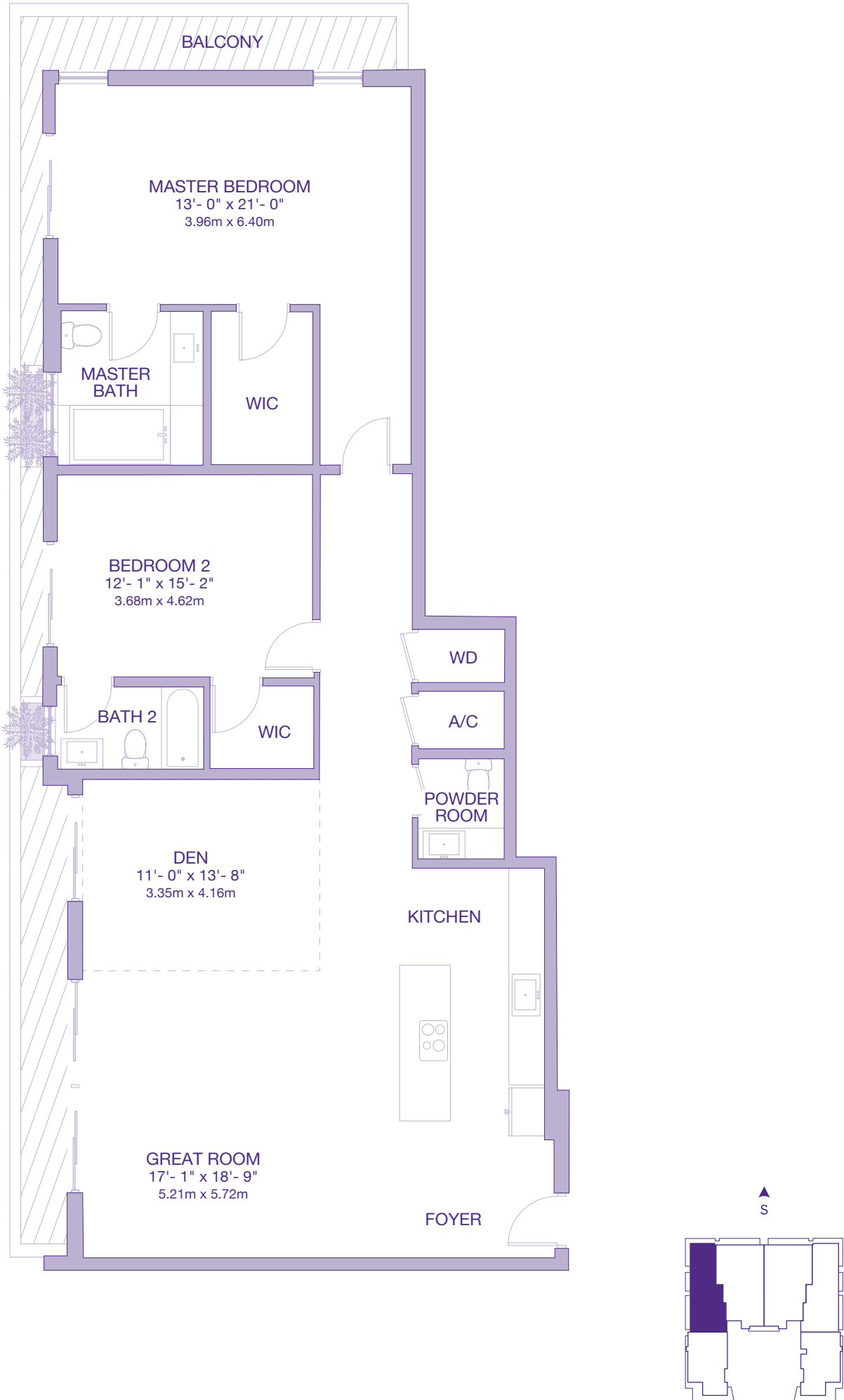


RESIDENCE	1400 sq. ft.	130 sq. m.
BALCONY/TERRACE	325 sq. ft.	30 sq. m.
TOTAL	1725 sq. ft.	160 sq. m.

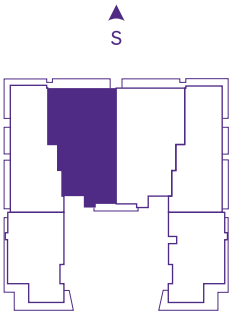
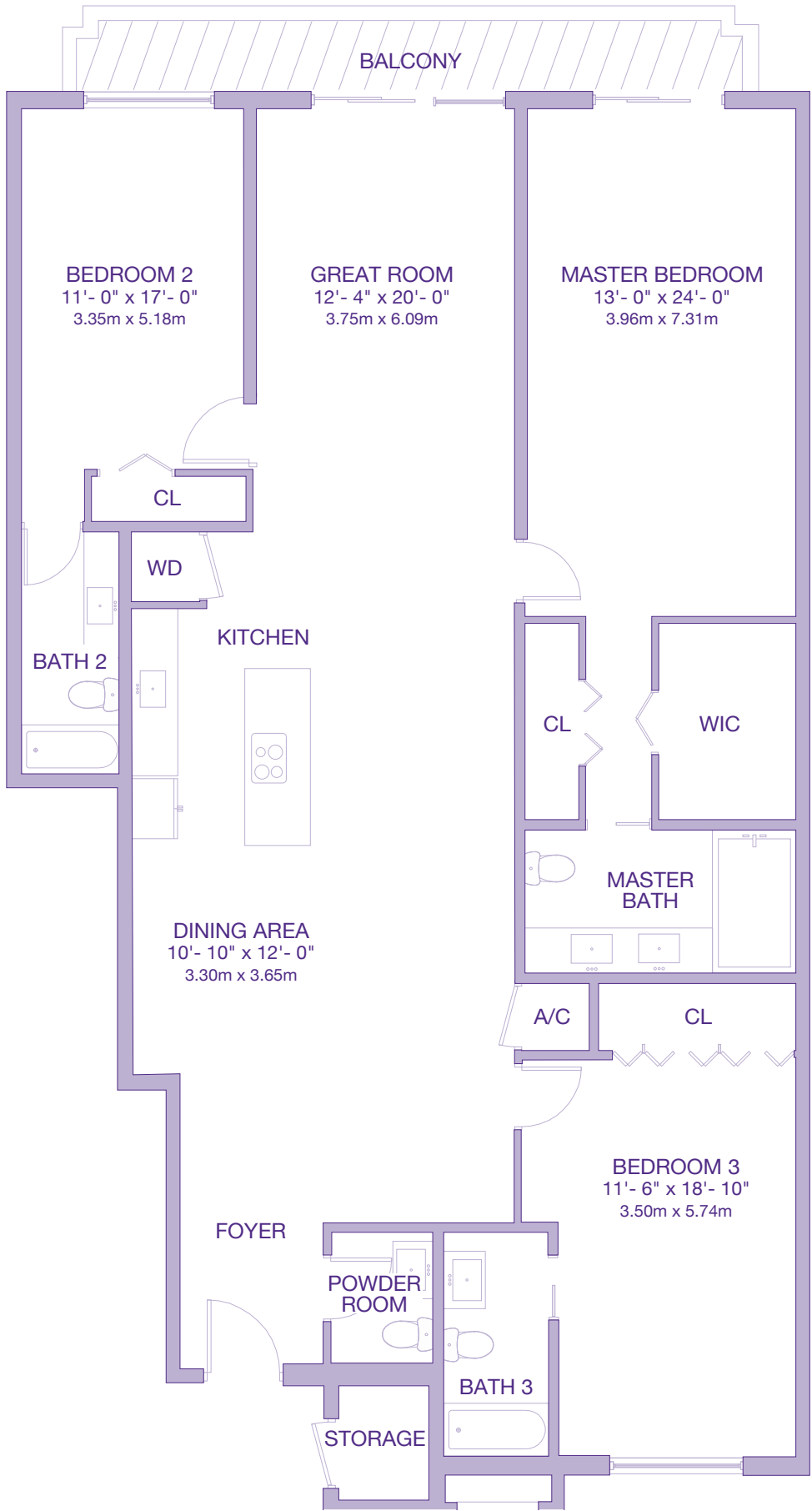


RESIDENCE	1800 sq. ft.	167 sq. m.
BALCONY/TERRACE	255 sq. ft.	24 sq. m.
TOTAL	2055 sq. ft.	191 sq. m.



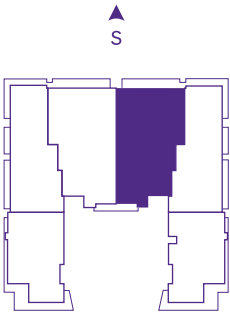
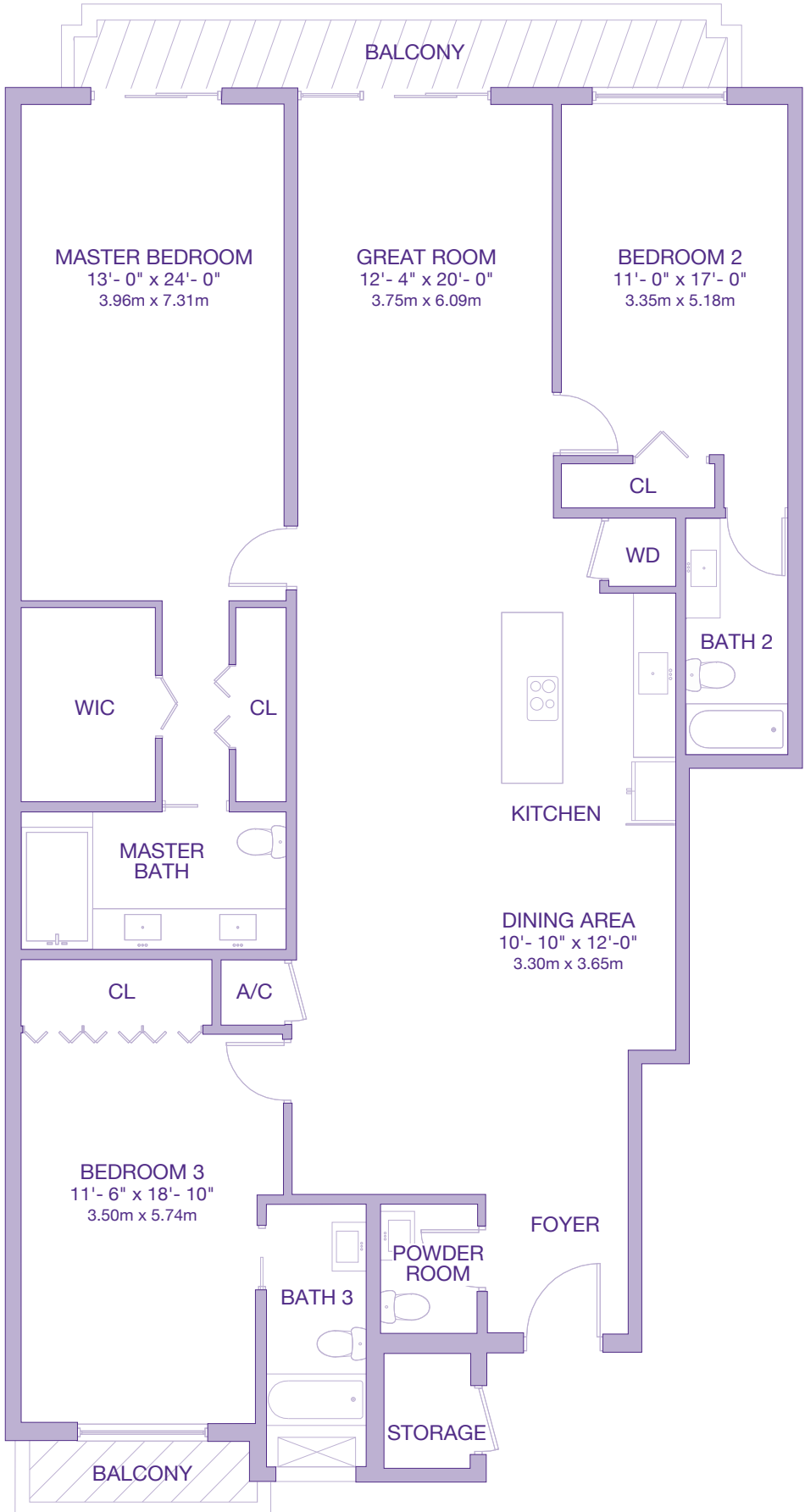
Stated dimensions are measured to the exterior boundaries of the exterior walls and the centerline of interior demising walls and in fact vary from the dimensions that would be determined by using the description and definition of the "Unit" set forth in the Declaration (which generally only includes the interior airspace between the perimeter walls and excludes interior structural components). For your reference, the area of the Unit, determined in accordance with those defined unit boundaries. Note that measurements of rooms set forth on this floor plan are generally taken at the greatest points of each given room (as if the room were a perfect rectangle), without regard for any cutouts. Accordingly, the area of the actual room will typically be smaller than the product obtained by multiplying the stated length times width. All dimensions are approximate and may vary with actual construction, and all floor plans and development plans are subject to change. © 2015 LE JARDIN. All Rights Reserved.

RESIDENCE	2235 sq. ft.	208 sq. m.
BALCONY/TERRACE	125 sq. ft.	12 sq. m.
TOTAL	2360 sq. ft.	220 sq. m.



Stated dimensions are measured to the exterior boundaries of the exterior walls and the centerline of interior demising walls and in fact vary from the dimensions that would be determined by using the description and definition of the "Unit" set forth in the Declaration (which generally only includes the interior airspace between the perimeter walls and excludes interior structural components). For your reference, the area of the Unit, determined in accordance with those defined unit boundaries. Note that measurements of rooms set forth on this floor plan are generally taken at the greatest points of each given room (as if the room were a perfect rectangle), without regard for any cutouts. Accordingly, the area of the actual room will typically be smaller than the product obtained by multiplying the stated length times width. All dimensions are approximate and may vary with actual construction, and all floor plans and development plans are subject to change. © 2015 LE JARDIN. All Rights Reserved.

RESIDENCE	2235 sq. ft.	208 sq. m.
BALCONY/TERRACE	125 sq. ft.	12 sq. m.
TOTAL	2360 sq. ft.	220 sq. m.

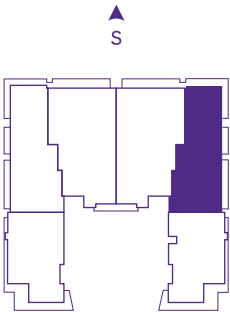
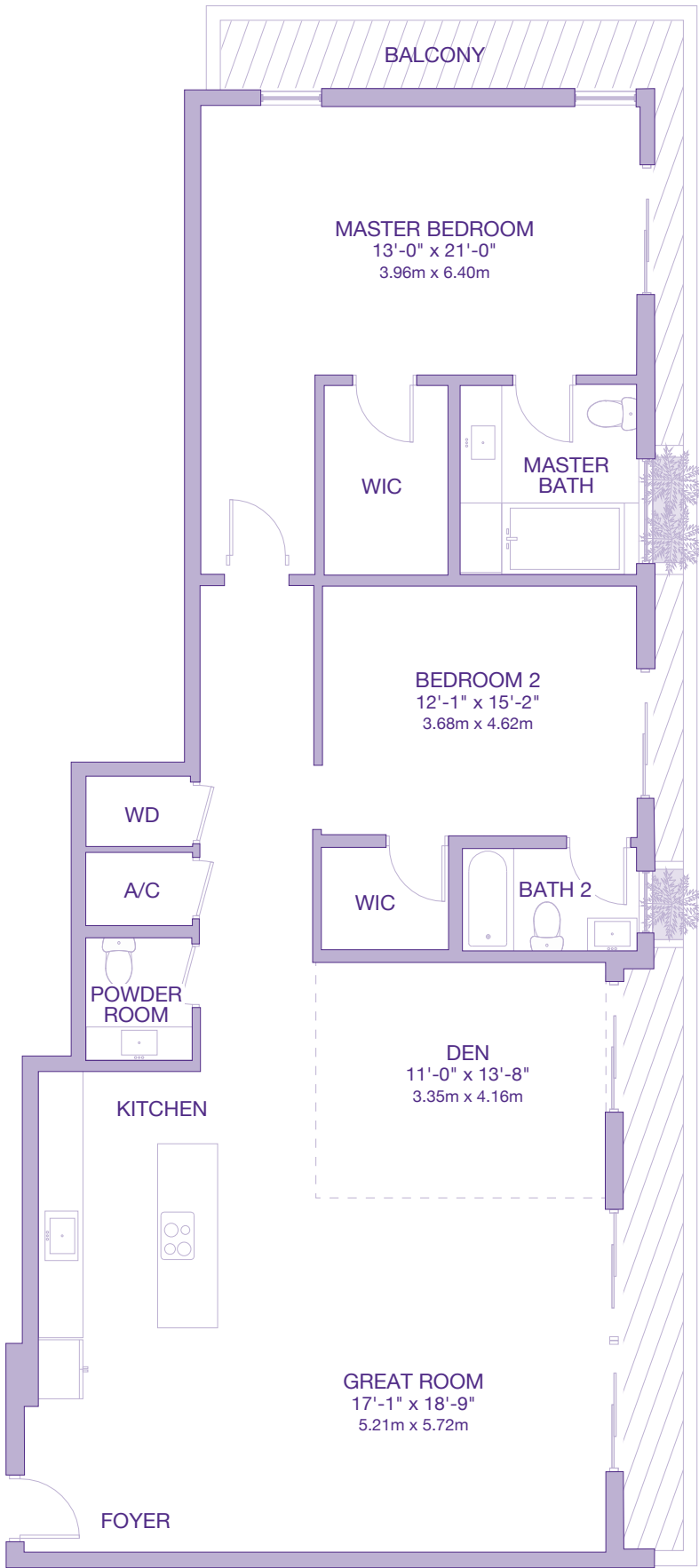


Stated dimensions are measured to the exterior boundaries of the exterior walls and the centerline of interior demising walls and in fact vary from the dimensions that would be determined by using the description and definition of the "Unit" set forth in the Declaration (which generally only includes the interior airspace between the perimeter walls and excludes interior structural components). For your reference, the area of the Unit, determined in accordance with those defined unit boundaries. Note that measurements of rooms set forth on this floor plan are generally taken at the greatest points of each given room (as if the room were a perfect rectangle), without regard for any cutouts. Accordingly, the area of the actual room will typically be smaller than the product obtained by multiplying the stated length times width. All dimensions are approximate and may vary with actual construction, and all floor plans and development plans are subject to change. © 2015 LE JARDIN. All Rights Reserved.

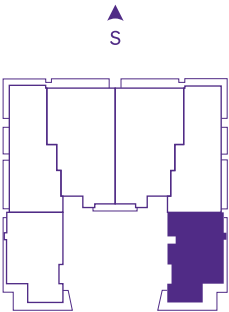
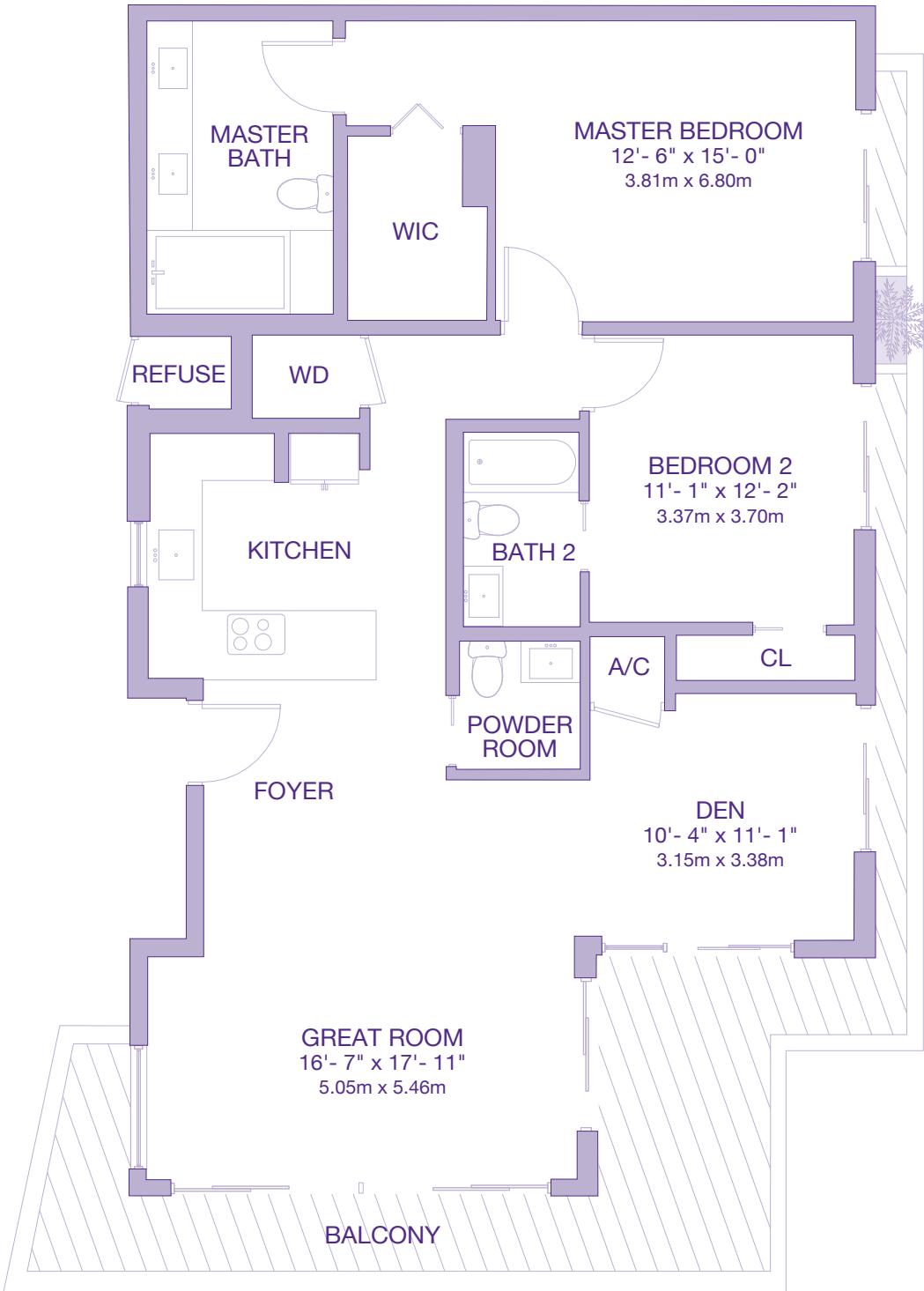
3rd Floor

2 BEDROOMS - 2.5 BATHROOMS + DEN

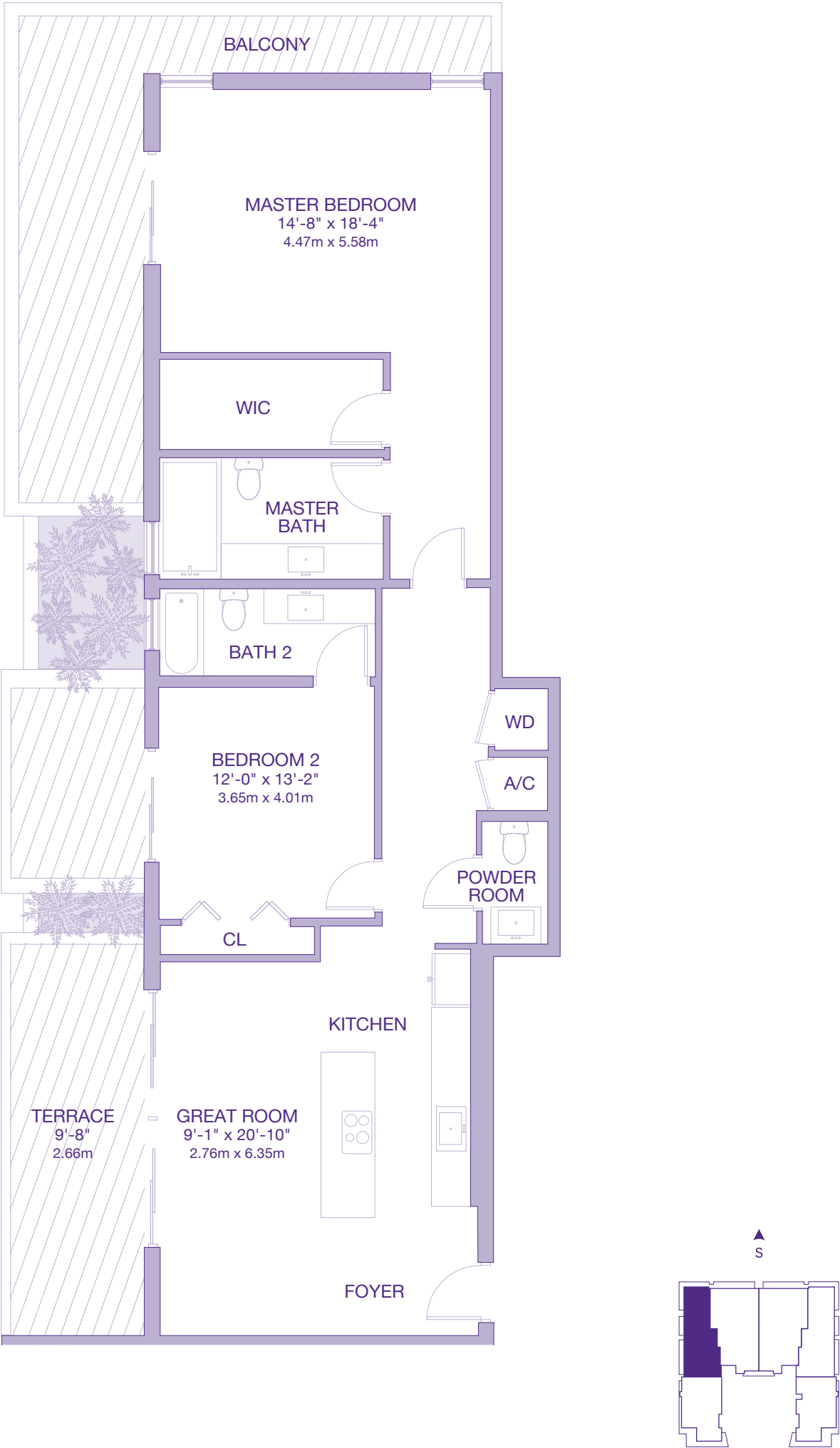
RESIDENCE	1800 sq. ft.	167 sq. m.
BALCONY/TERRACE	255 sq. ft.	24 sq. m.
TOTAL	2055 sq. ft.	191 sq. m.



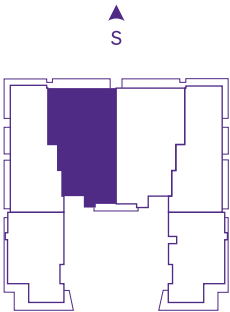
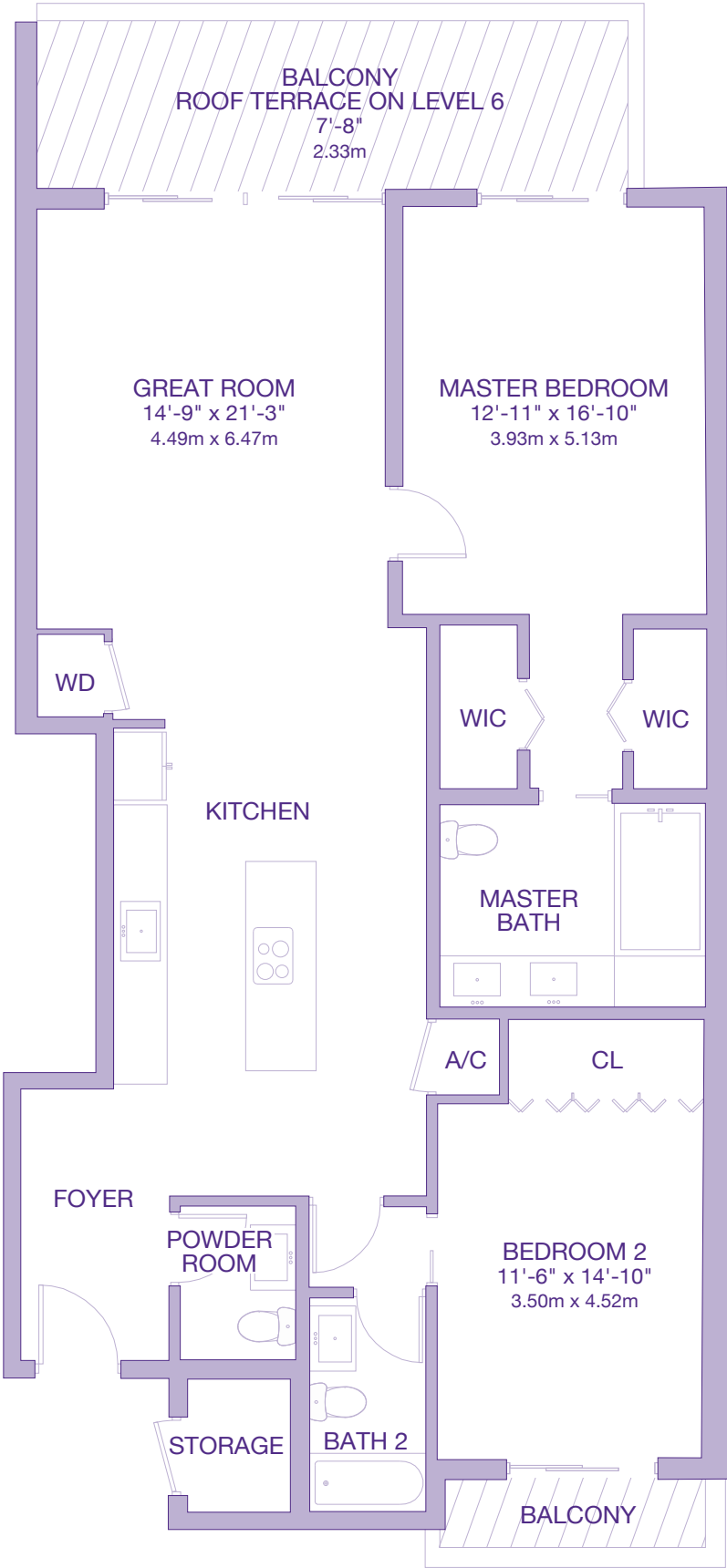
RESIDENCE	1385 sq. ft.	129 sq. m.
BALCONY/TERRACE	325 sq. ft.	30 sq. m.
TOTAL	2055 sq. ft.	191 sq. m.



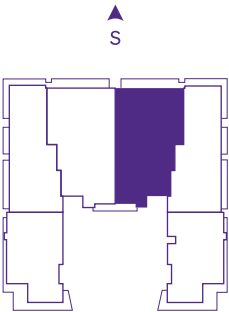
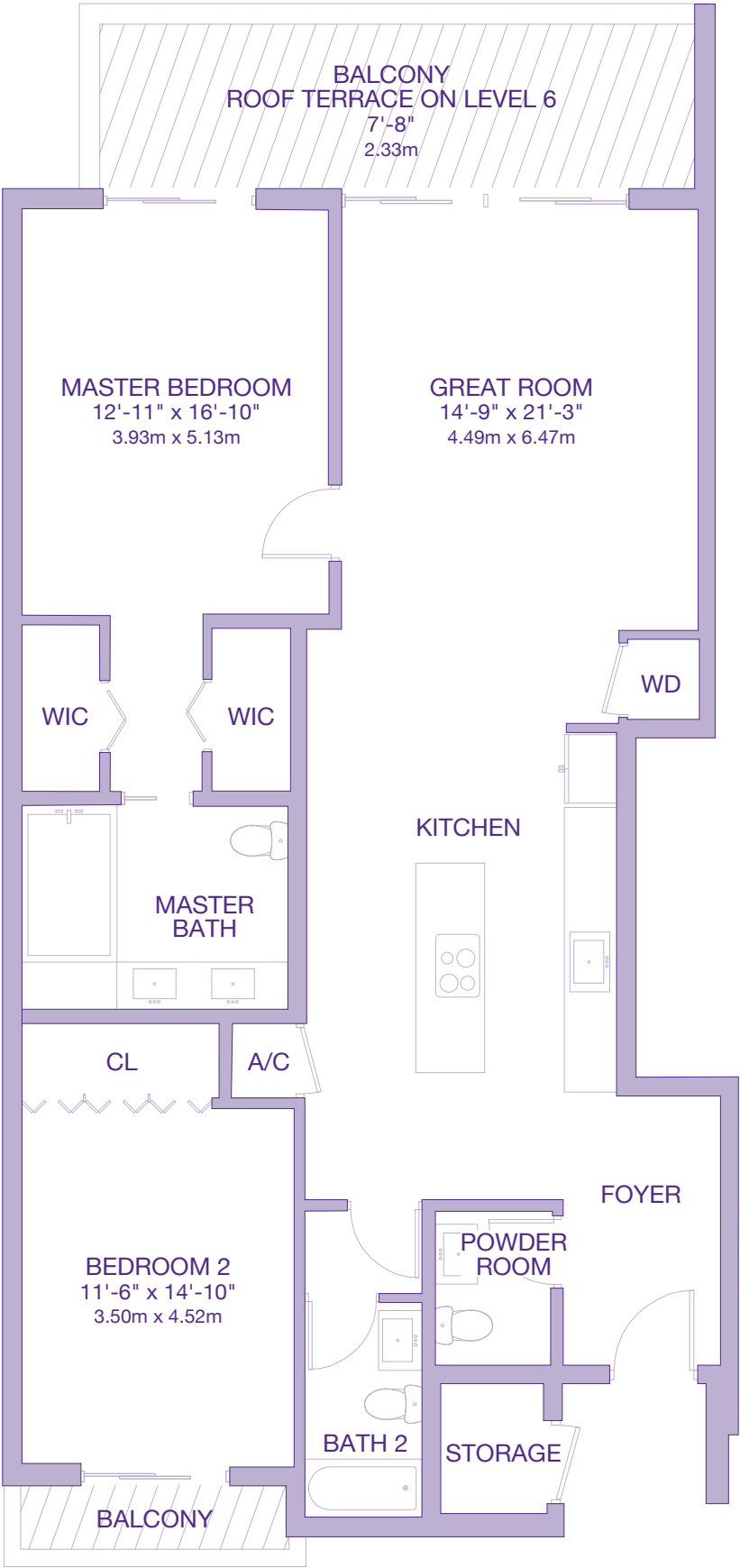
RESIDENCE	1420 sq. ft.	132 sq. m.
BALCONY/TERRACE	580 sq. ft.	52 sq. m.
TOTAL	2000 sq. ft.	186 sq. m.



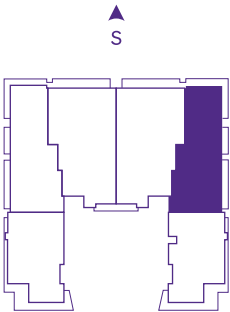
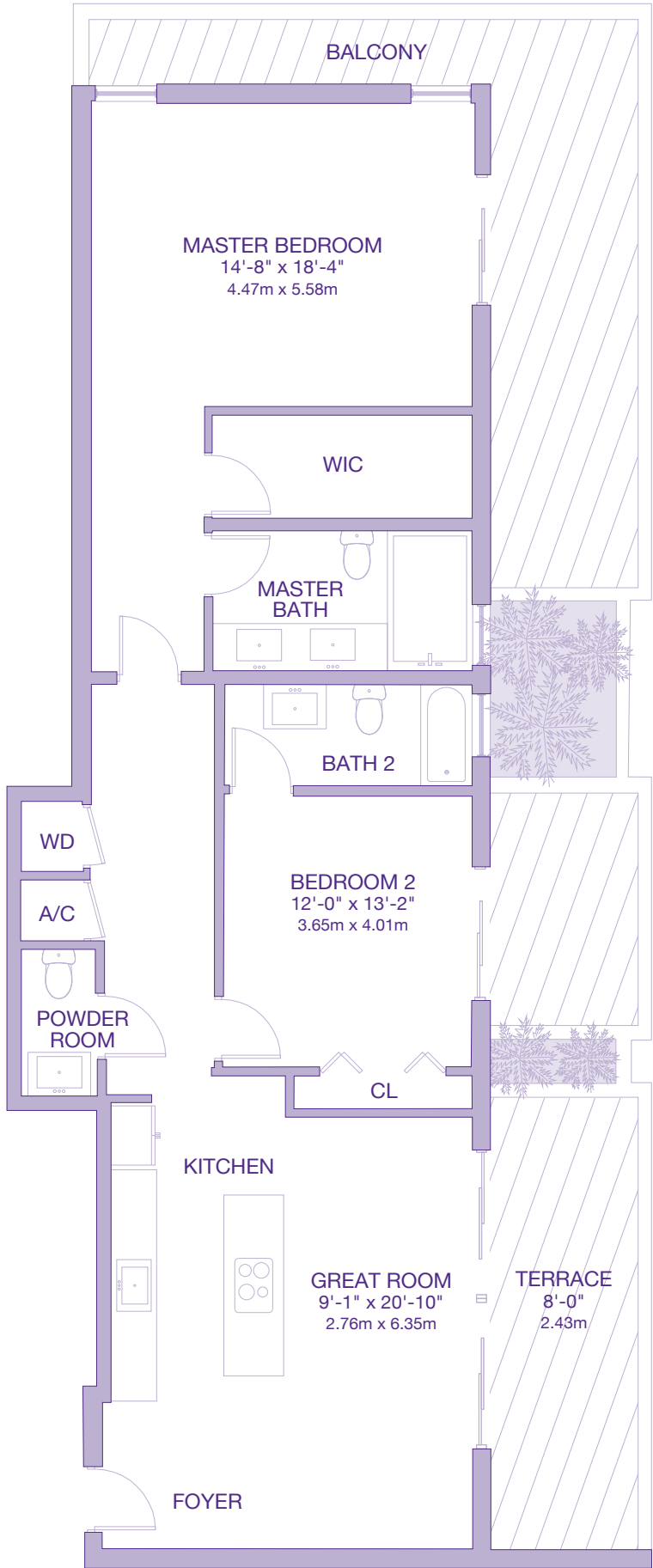
RESIDENCE	1509 sq. ft.	140 sq. m.
BALCONY/TERRACE	193 sq. ft.	18 sq. m.
TOTAL	1702 sq. ft.	158 sq. m.



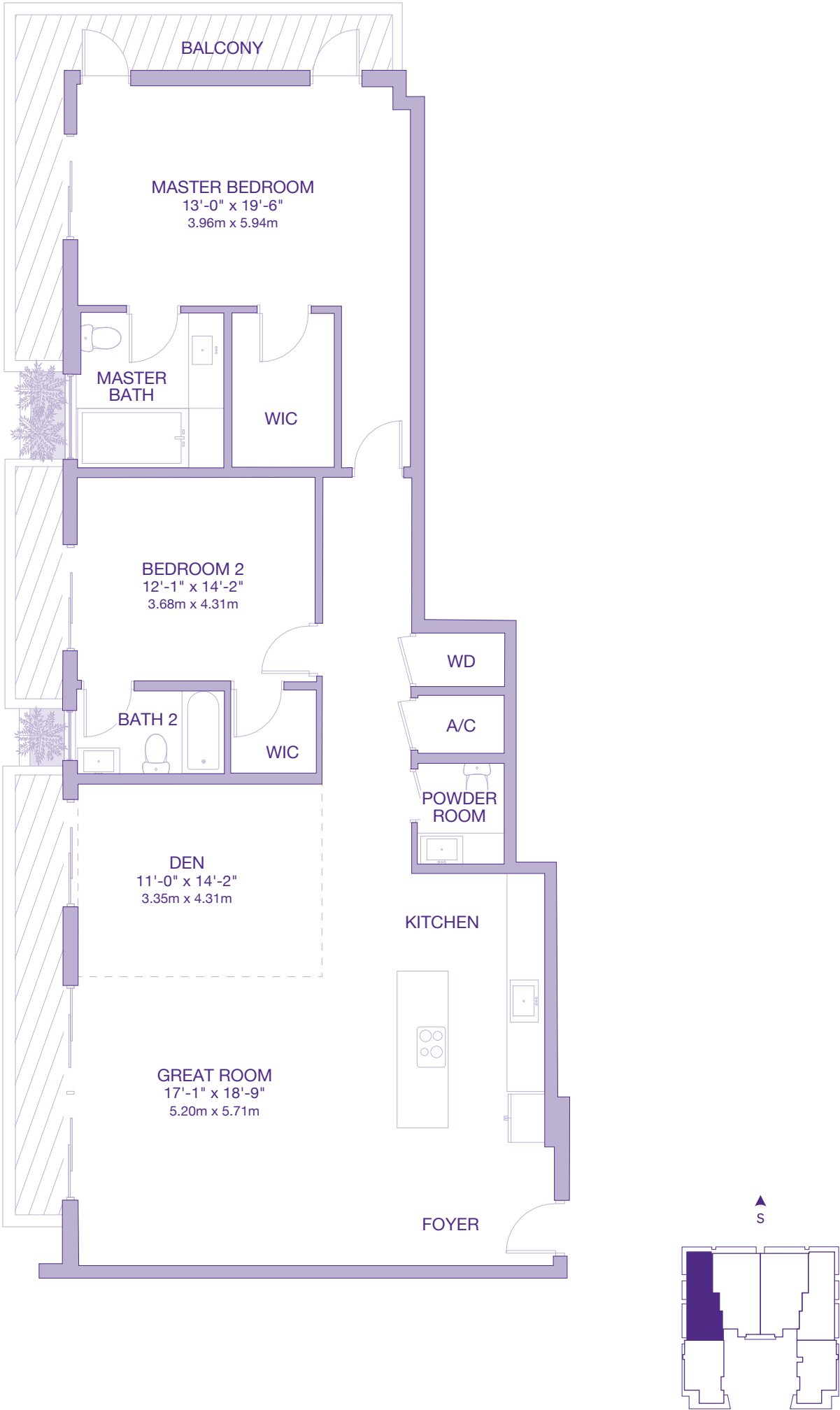
RESIDENCE	1509 sq. ft.	140 sq. m.
BALCONY/TERRACE	193 sq. ft.	18 sq. m.
TOTAL	1702 sq. ft.	158 sq. m.



RESIDENCE	1420 sq. ft.	132 sq. m.
BALCONY/TERRACE	580 sq. ft.	54 sq. m.
TOTAL	2000 sq. ft.	186 sq. m.

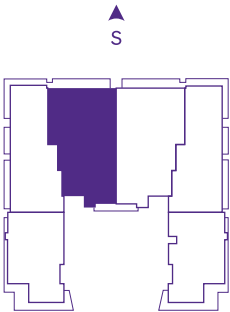
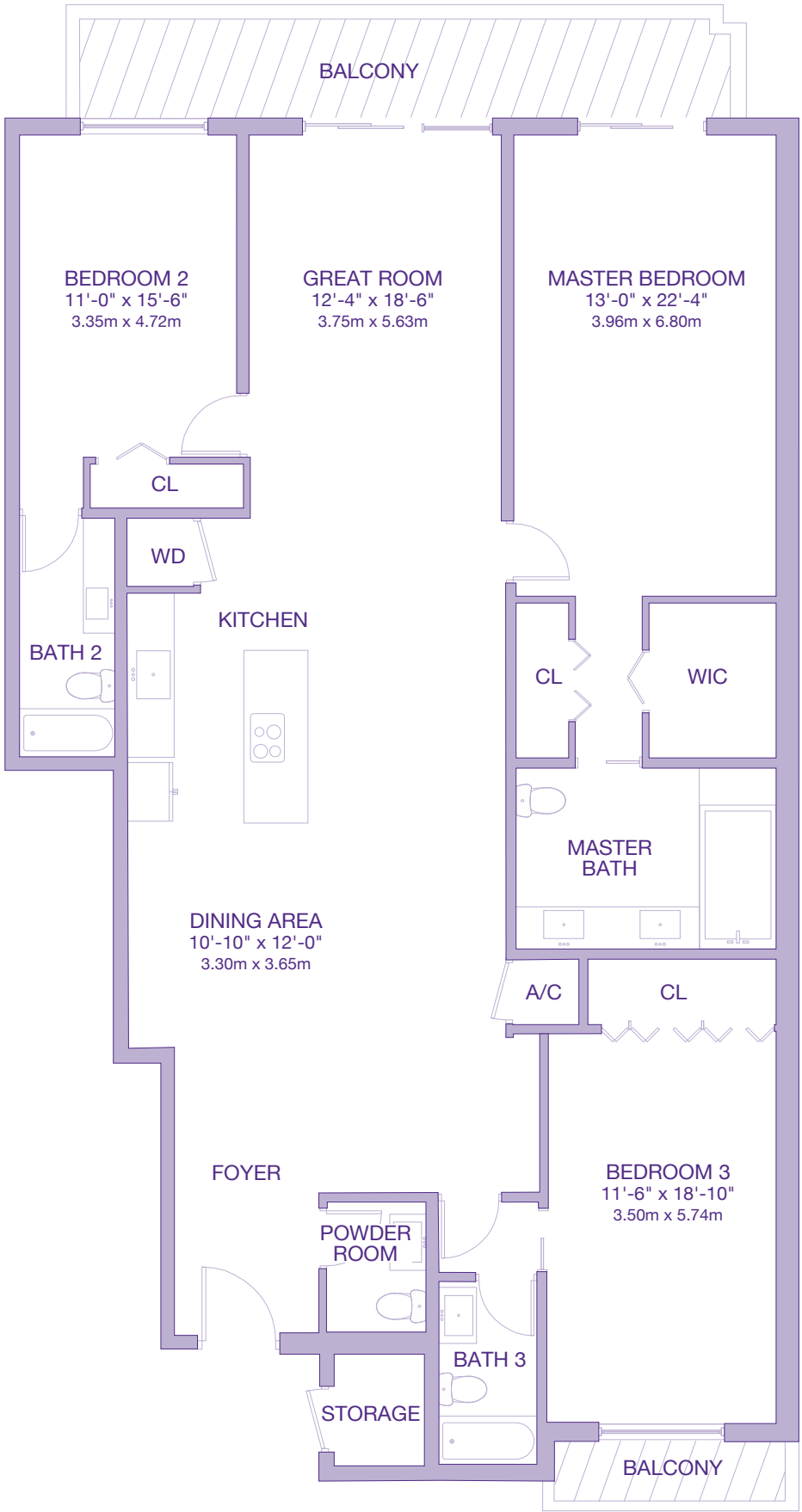


RESIDENCE	1740 sq. ft.	162 sq. m.
BALCONY/TERRACE	300 sq. ft.	28 sq. m.
TOTAL	2040 sq. ft.	190 sq. m.

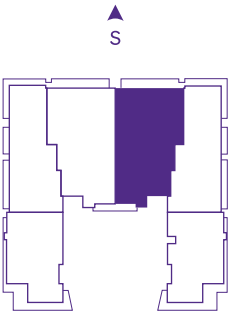
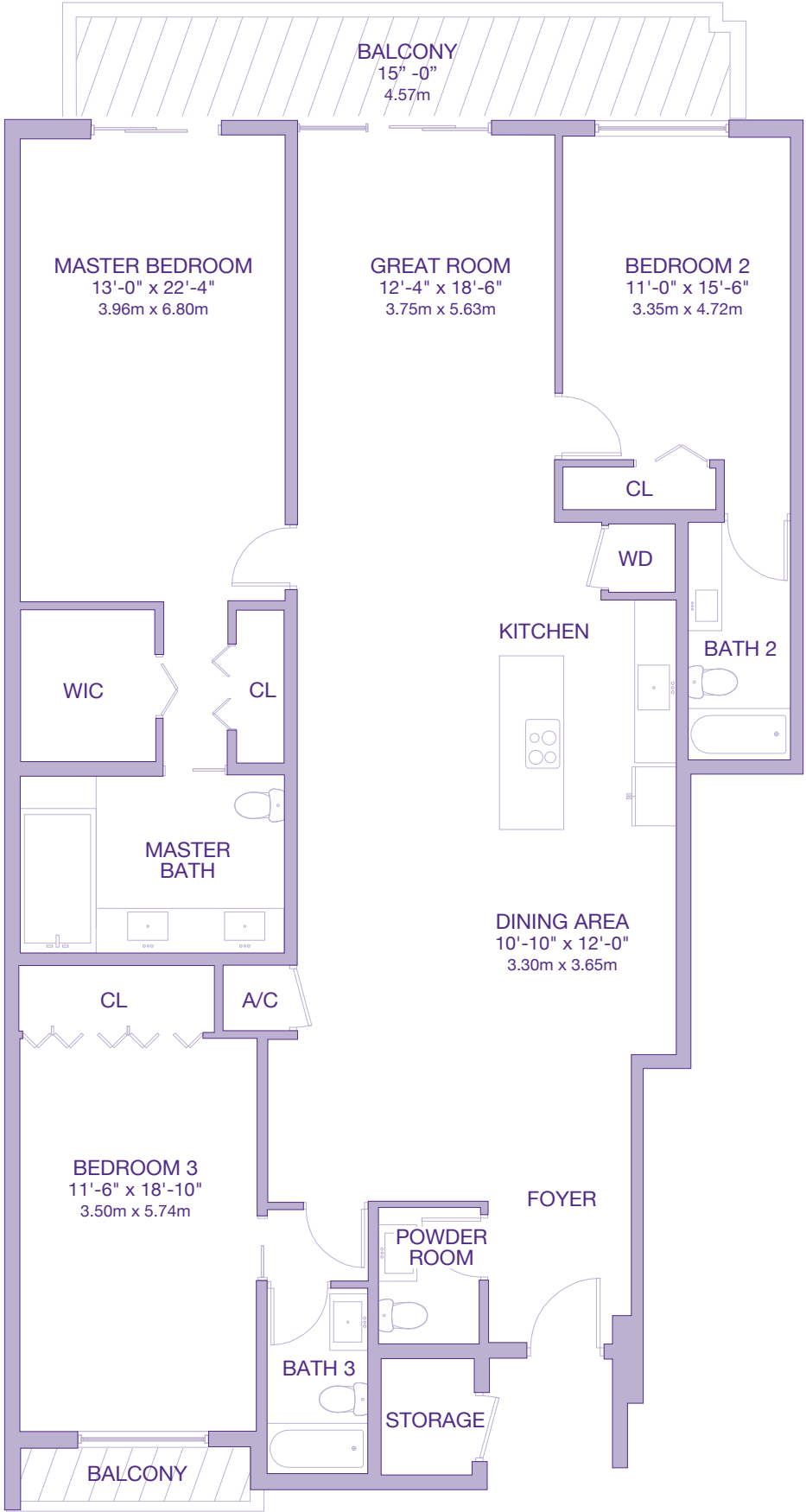


Stated dimensions are measured to the exterior boundaries of the exterior walls and the centerline of interior demising walls and in fact vary from the dimensions that would be determined by using the description and definition of the "Unit" set forth in the Declaration (which generally only includes the interior airspace between the perimeter walls and excludes interior structural components). For your reference, the area of the Unit, determined in accordance with those defined unit boundaries. Note that measurements of rooms set forth on this floor plan are generally taken at the greatest points of each given room (as if the room were a perfect rectangle), without regard for any cutouts. Accordingly, the area of the actual room will typically be smaller than the product obtained by multiplying the stated length times width. All dimensions are approximate and may vary with actual construction, and all floor plans and development plans are subject to change. © 2015 LE JARDIN. All Rights Reserved.

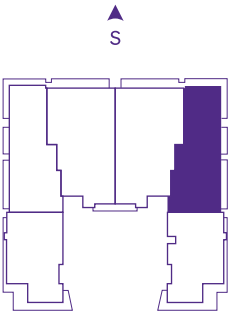
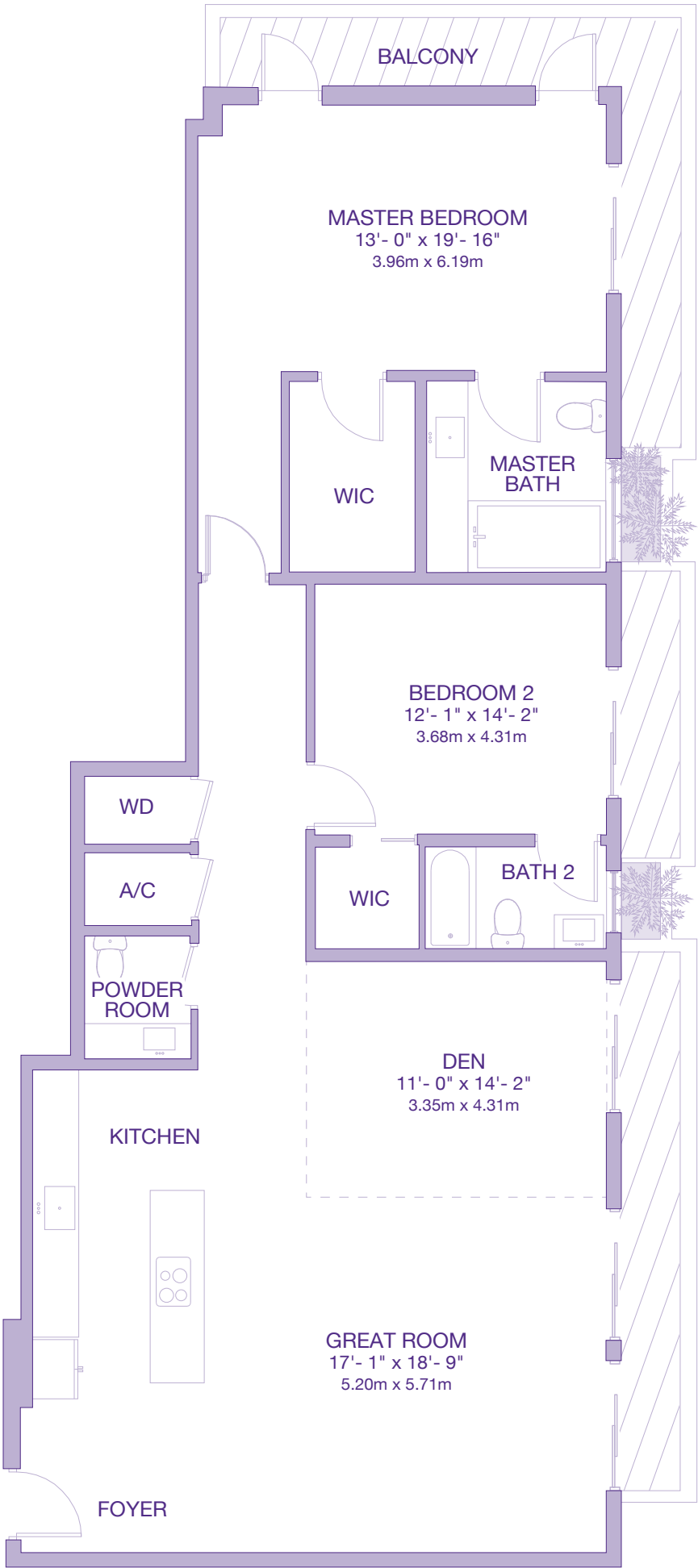
RESIDENCE	2185 sq. ft.	203 sq. m.
BALCONY/TERRACE	177 sq. ft.	16 sq. m.
TOTAL	2362 sq. ft.	219 sq. m.



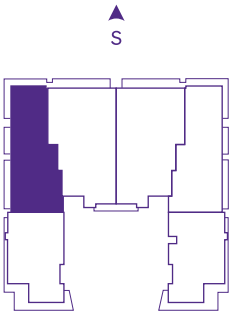
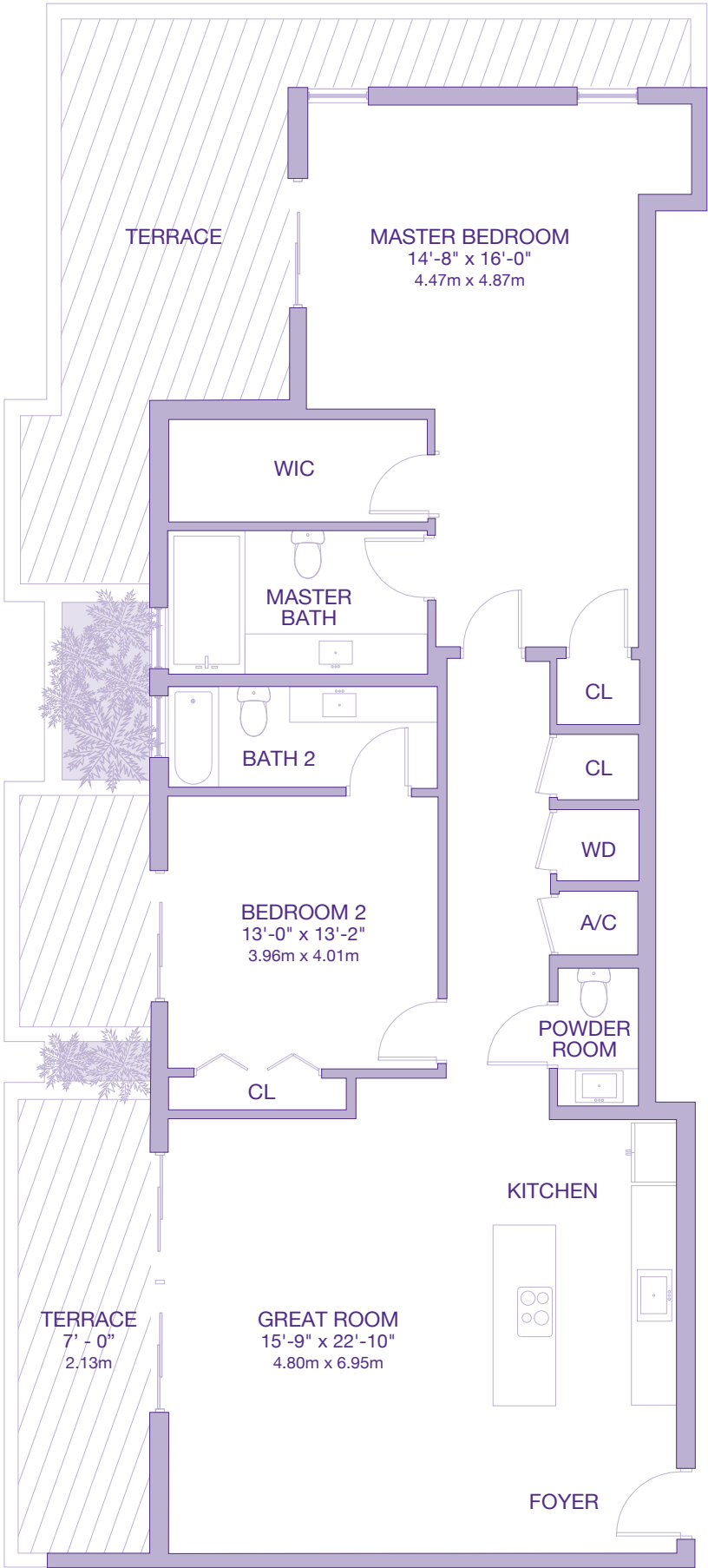
RESIDENCE	2185 sq. ft.	203 sq. m.
BALCONY/TERRACE	177 sq. ft.	16 sq. m.
TOTAL	2362 sq. ft.	219 sq. m.



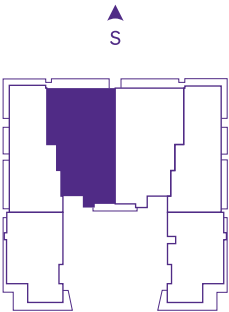
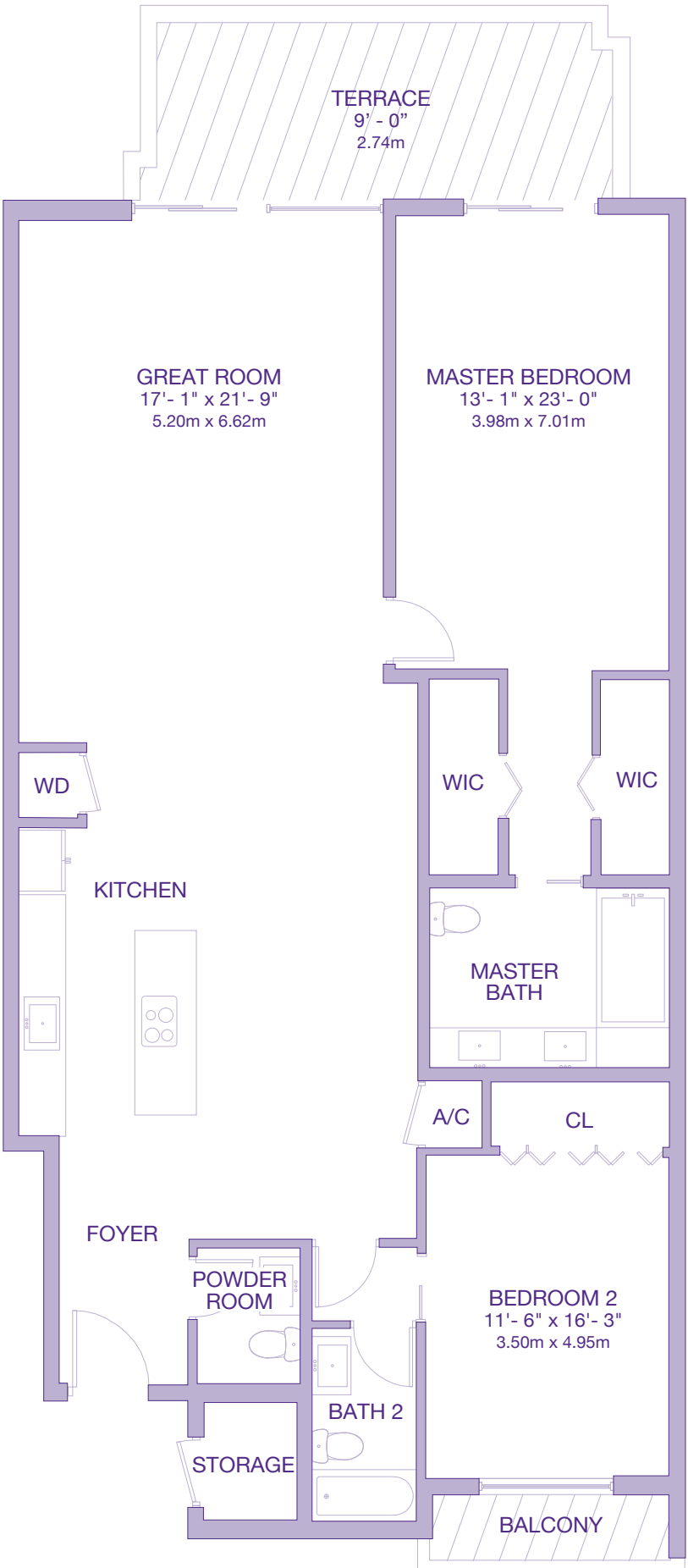
RESIDENCE	1740 sq. ft.	162 sq. m.
BALCONY/TERRACE	158 sq. ft.	15 sq. m.
TOTAL	1898 sq. ft.	176 sq. m.



RESIDENCE	1638 sq. ft.	152 sq. m.
BALCONY/TERRACE	616 sq. ft.	57 sq. m.
TOTAL	2254 sq. ft.	209 sq. m.

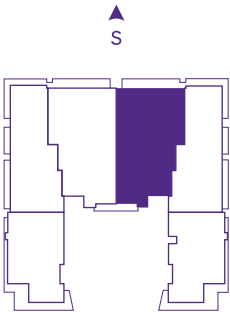
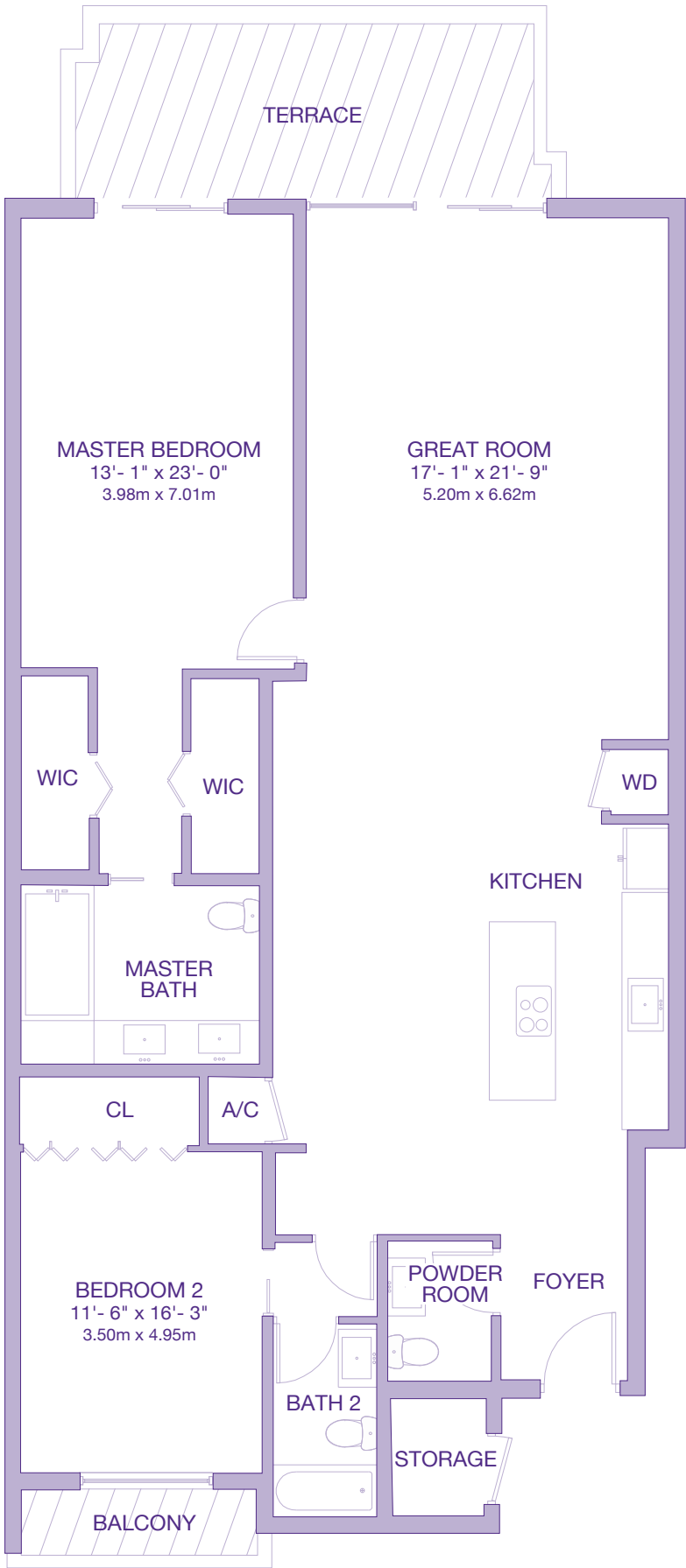


RESIDENCE	1833 sq. ft.	170 sq. m.
BALCONY/TERRACE	205 sq. ft.	19 sq. m.
TOTAL	2038 sq. ft.	189 sq. m.

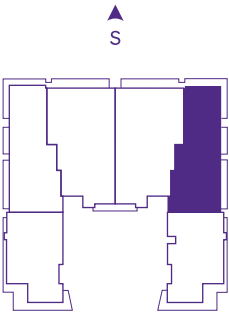
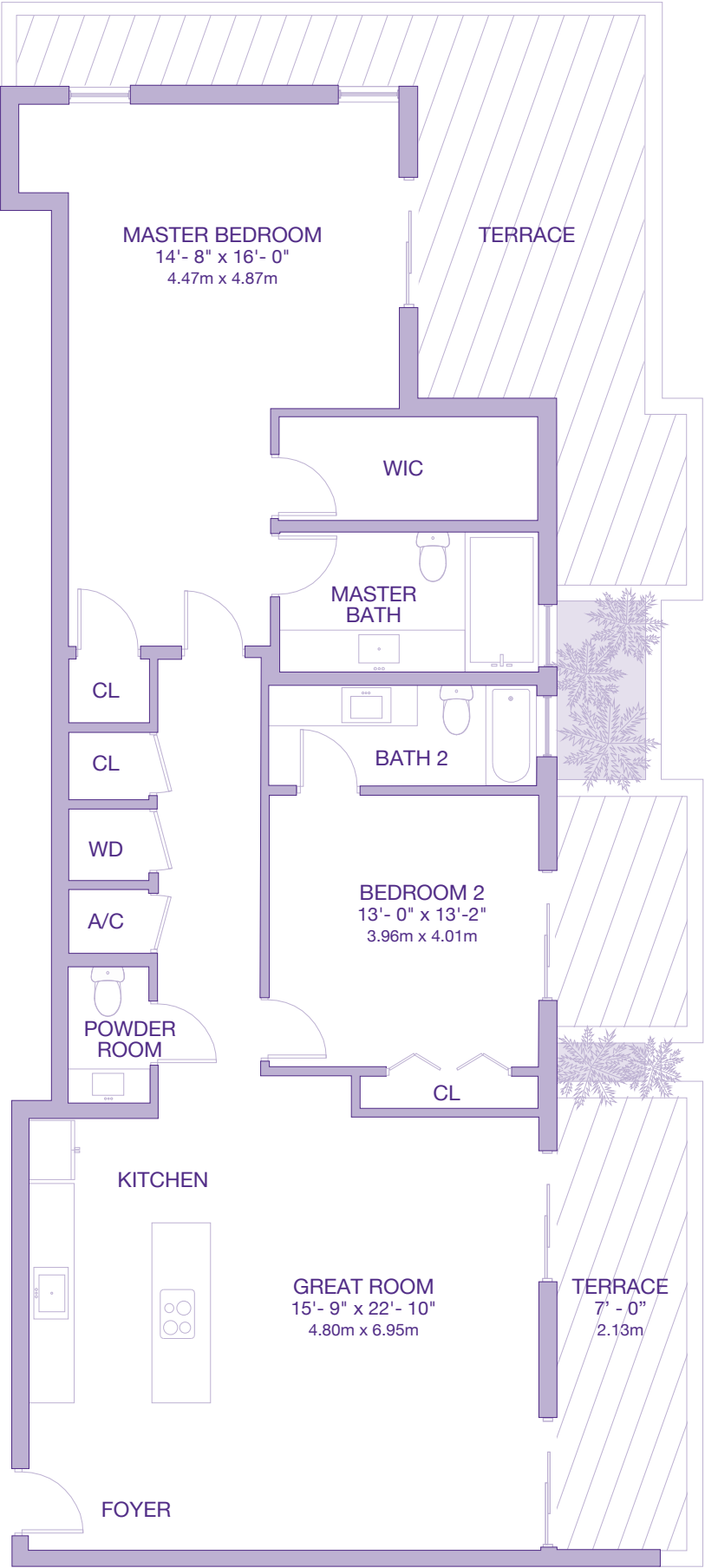


Stated dimensions are measured to the exterior boundaries of the exterior walls and the centerline of interior demising walls and in fact vary from the dimensions that would be determined by using the description and definition of the "Unit" set forth in the Declaration (which generally only includes the interior airspace between the perimeter walls and excludes interior structural components). For your reference, the area of the Unit, determined in accordance with those defined unit boundaries. Note that measurements of rooms set forth on this floor plan are generally taken at the greatest points of each given room (as if the room were a perfect rectangle), without regard for any cutouts. Accordingly, the area of the actual room will typically be smaller than the product obtained by multiplying the stated length times width. All dimensions are approximate and may vary with actual construction, and all floor plans and development plans are subject to change. © 2015 LE JARDIN. All Rights Reserved.

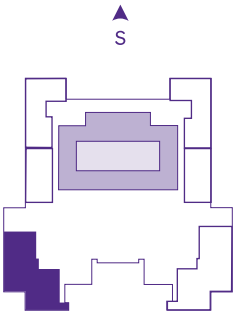
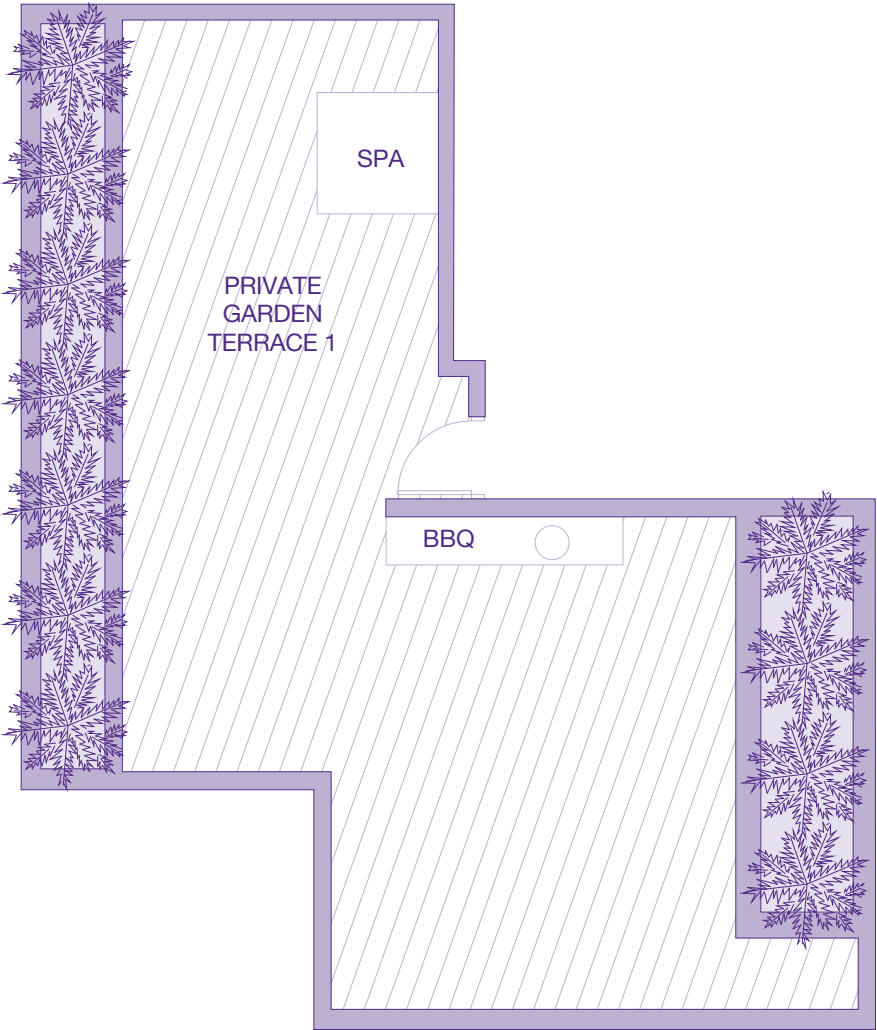
RESIDENCE	1833 sq. ft.	170 sq. m.
BALCONY/TERRACE	205 sq. ft.	19 sq. m.
TOTAL	2038 sq. ft.	189 sq. m.



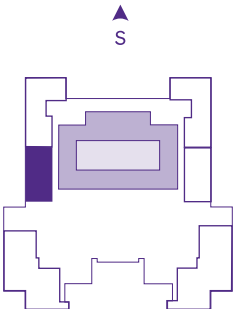
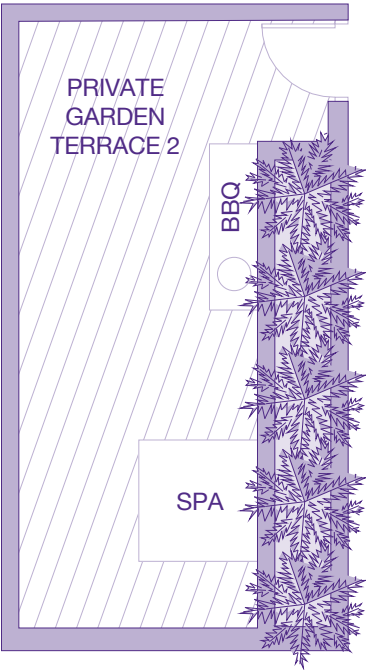
RESIDENCE	1638 sq. ft.	152 sq. m.
BALCONY/TERRACE	616 sq. ft.	57.22 sq. m.
TOTAL	2254 sq. ft.	209 sq. m.



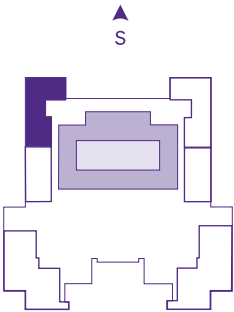
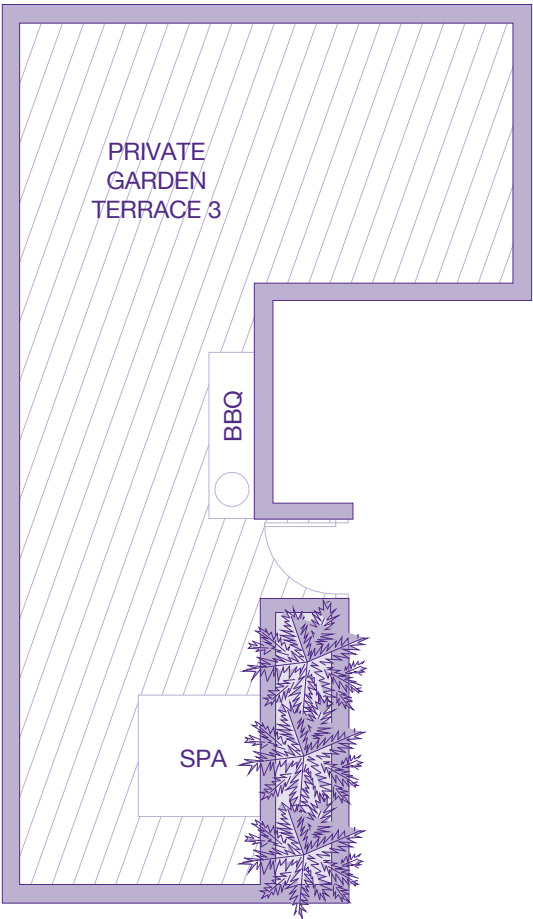
BALCONY/TERRACE	325 sq. ft.	30 sq. m.
TOTAL	325 sq. ft.	30 sq. m.



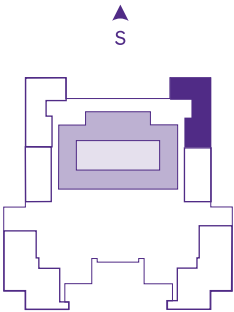
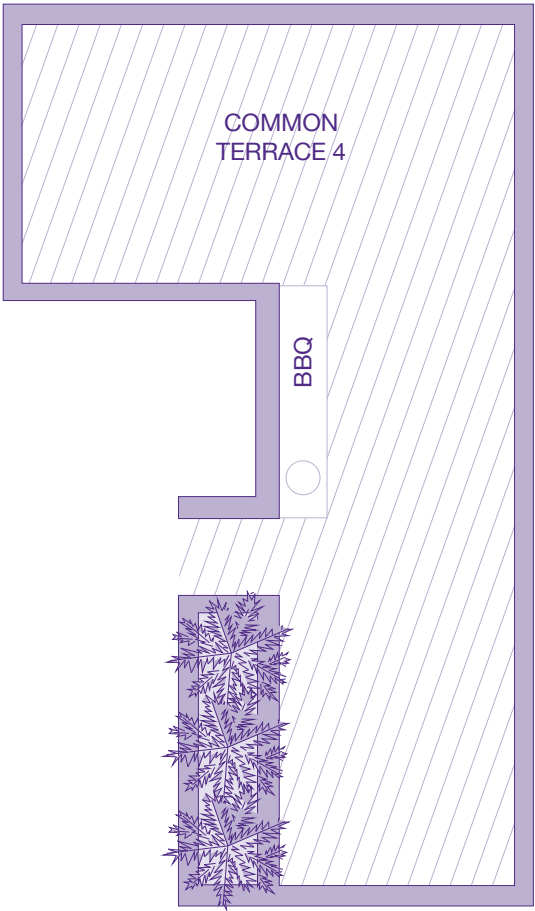
BALCONY/TERRACE	580 sq. ft.	54 sq. m.
TOTAL	580 sq. ft.	54 sq. m.



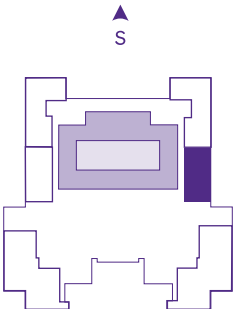
BALCONY/TERRACE	193 sq. ft.	18 sq. m.
TOTAL	193 sq. ft.	18 sq. m.



BALCONY/TERRACE	193 sq. ft.	18 sq. m.
TOTAL	193 sq. ft.	18 sq. m.



BALCONY/TERRACE	580 sq. ft.	54 sq. m.
TOTAL	580 sq. ft.	54 sq. m.



BALCONY/TERRACE	325 sq. ft.	30 sq. m.
TOTAL	325 sq. ft.	30 sq. m.

